

CITY OF KETCHUM, IDAHO

DATE: March 8, 2024

ADDENDUM NO. 1

Idaho Project No. A022(210)  
SH-75, Main St, Ketchum  
Blaine County, Key No. 22210

NOTICE TO PLANHOLDERS:

Enclosed are changes to Specifications as stated below, Revisions to existing Sheets as stated below, six new Drawing sheets.

SPECIFICATIONS

- In Notice of Letting, REPLACE with attached. Changes include:

- Bid Opening Date
- Phone number of Ben Whipple

- In Bid Form, on pages 3-7 REPLACE Base Bid and Additive Alternate 1 – 2<sup>nd</sup> Street tables with:

| <b>SH-75, RIVER ST TO 10TH ST - MAIN ST<br/>Base Bid</b> |                                             |                           |             |                   |                            |
|----------------------------------------------------------|---------------------------------------------|---------------------------|-------------|-------------------|----------------------------|
| <b>Unit Price Schedule</b>                               |                                             |                           |             |                   |                            |
| <b>Item No.</b>                                          | <b>Description</b>                          | <b>Estimated Quantity</b> | <b>Unit</b> | <b>Unit Price</b> | <b>Extended Unit Price</b> |
|                                                          | <b>REMOVALS</b>                             |                           |             |                   |                            |
| 201-005A                                                 | CLEARING & GRUBBING                         | 1                         | ACRE        |                   |                            |
| 202-005A                                                 | SELECTIVE REMOVAL OF TREES INCLUDING STUMPS | 22                        | EACH        |                   |                            |
| 203-001A                                                 | REMOVAL OF OBSTRUCTIONS (PAVERS)            | 1,191                     | SY          |                   |                            |
| 203-001B                                                 | REMOVAL OF OBSTRUCTIONS (LANDSCAPE)         | 113                       | SY          |                   |                            |
| 203-001C                                                 | REMOVAL OF OBSTRUCTIONS (WOOD SIDEWALK)     | 42                        | SY          |                   |                            |
| 203-002A                                                 | REMOVAL OF OBSTRUCTIONS (LUMINAIRE)         | 4                         | EACH        |                   |                            |
| 203-002B                                                 | REMOVAL OF OBSTRUCTIONS (BIKE RACK)         | 4                         | EACH        |                   |                            |
| 203-002C                                                 | REMOVAL OF OBSTRUCTIONS (TRASH RECEPTACLE)  | 2                         | EACH        |                   |                            |
| 203-003A                                                 | REMOVAL OF OBSTRUCTIONS (RETAINING WALL)    | 106                       | FT          |                   |                            |

|          |                                                                 |        |      |  |  |
|----------|-----------------------------------------------------------------|--------|------|--|--|
| 203-005A | REMOVAL OF OBSTRUCTIONS (RAMP AND HANDRAILS)                    | -      | LS   |  |  |
| 203-006A | REMOVAL OF SIGN                                                 | 51     | EACH |  |  |
| 203-015A | REMOVAL OF BITUMINOUS SURFACE                                   | 20,768 | SY   |  |  |
| 203-055A | REMOVAL OF CONCRETE PAVEMENT                                    | 86     | SY   |  |  |
| 203-060A | REMOVAL OF CONCRETE SIDEWALK                                    | 1,775  | SY   |  |  |
| 203-070A | REMOVAL OF CURB & GUTTER                                        | 5,027  | FT   |  |  |
| 203-085A | REMOVAL OF GUTTER                                               | 195    | FT   |  |  |
| 203-090A | REMOVAL OF INLET                                                | 17     | EACH |  |  |
| 203-122A | REMOVAL OF MISCELLANEOUS ITEMS (POLE FOUNDATION)                | 3      | EACH |  |  |
| 203-122B | REMOVAL OF MISCELLANEOUS ITEMS (SIGNAL HEAD)                    | 6      | EACH |  |  |
| 203-123B | REMOVAL OF MISCELLANEOUS ITEMS (PIPE)                           | 256    | FT   |  |  |
| 203-130B | REMOVAL OF PAVEMENT MARKINGS                                    | 19     | SF   |  |  |
|          |                                                                 |        |      |  |  |
|          | <b>ROADWAY &amp; HARDSCAPE</b>                                  |        |      |  |  |
| 205-005A | EXCAVATION                                                      | 1,107  | CY   |  |  |
| 205-030A | BORROW                                                          | 2,754  | CY   |  |  |
| 301-005A | GRANULAR SUBBASE                                                | 350    | TON  |  |  |
| 303-022A | 3/4" AGGREGATE TYPE B FOR BASE                                  | 2,220  | TON  |  |  |
| 401-014A | DILUTED EMULSIFIED ASPHALT FOR TACK COAT                        | 1,600  | GAL  |  |  |
| 405-240A | MISCELLANEOUS PAVEMENT                                          | 52     | SY   |  |  |
| 405-245A | APPROACH                                                        | 1      | EACH |  |  |
| 405-455A | SUPERPAVE HMA PAVEMENT INCLUDING ASPHALT & ADDITIVES CLASS SP-5 | 6,410  | TON  |  |  |
| 509-010A | NON-STRUCTURAL CONCRETE                                         | 64     | SY   |  |  |
| 614-015A | SIDEWALK                                                        | 948    | SY   |  |  |
| 614-020A | DRIVEWAY                                                        | 180    | SY   |  |  |
| 614-025A | CURB RAMP                                                       | 490    | SY   |  |  |
| 615-256A | CURB TYPE 1                                                     | 301    | FT   |  |  |
| 615-257A | CURB TYPE 2                                                     | 89     | FT   |  |  |
| 615-331A | GUTTER TYPE 1                                                   | 108    | FT   |  |  |
| 615-492A | CURB & GUTTER TYPE 2                                            | 9      | FT   |  |  |
| 615-651A | TRAFFIC SEPARATOR TYPE 1                                        | 52     | FT   |  |  |

|          |                                          |       |      |  |  |
|----------|------------------------------------------|-------|------|--|--|
| S605-10A | CONC COLLAR                              | 1     | EACH |  |  |
| S904-05A | SP CONCRETE RAMP AND STAIRS              | 1     | LS   |  |  |
| S911-05A | SP 6" ROLLED CURB & GUTTER               | 5,239 | FT   |  |  |
| S911-05B | SP 6" RIBBON CURB                        | 19    | FT   |  |  |
| S912-05A | SP PAVER SIDEWALK                        | 2,668 | SY   |  |  |
| S912-05B | SP WOOD SIDEWALK                         | 100   | SY   |  |  |
| S912-05D | SP PAVER CURB RAMP                       | 41    | SY   |  |  |
| S912-05E | SP NEW SNOWMELT                          | 60    | SY   |  |  |
|          | <b>DRAINAGE</b>                          |       |      |  |  |
| 605-025A | 12" STORM SEWER PIPE                     | 462   | FT   |  |  |
| 605-035A | 18" STORM SEWER PIPE                     | 66    | FT   |  |  |
| 605-455A | MANHOLE TYPE A                           | 1     | EACH |  |  |
| 605-500A | CATCH BASIN TYPE 1                       | 23    | EACH |  |  |
| 605-635A | ADJUST MANHOLE COVERS                    | 20    | EACH |  |  |
| 605-640A | ADJUST VALVE COVERS                      | 11    | EACH |  |  |
| 605-655A | DRYWELL                                  | 4     | EACH |  |  |
| 606-110A | PIPE UNDERDRAIN                          | 143   | LF   |  |  |
|          | <b>SIGNAL AND ILLUMINATION</b>           |       |      |  |  |
| 619-010A | ILLUMINATION TYPE 2                      | 1     | LS   |  |  |
| 656-015A | INTERSECTION PREEMPTION DETECTION SYSTEM | 2     | EACH |  |  |
| 656-020B | INTERSECTION DETECTION SYSTEM - RADAR    | 3     | EACH |  |  |
| 656-020C | INTERSECTION DETECTION SYSTEM - VIDEO    | 3     | EACH |  |  |
| 656-020E | INTERSECTION DETECTION SYSTEM - THERMAL  | 3     | EACH |  |  |
| 656-030A | INTERSECTION SIGNAL STRUCTURE            | 3     | EACH |  |  |
| 656-035A | INTERSECTION PEDESTRIAN SYSTEM           | 24    | EACH |  |  |
| 656-040A | SIGNAL CABINET                           | 3     | EACH |  |  |
| 656-045A | SIGNAL CONTROLLER                        | 3     | EACH |  |  |
| 656-070A | ADDITIONAL ELECTRICAL ITEMS              | 1     | LS   |  |  |
| 657-015A | RRFB, AC POWERED                         | 1     | EACH |  |  |
| 657-020A | RRFB, SOLAR POWERED                      | 1     | EACH |  |  |
| S901-05H | SP TRAFFIC SIGNAL HOUSE - RESET          | 4     | EACH |  |  |
| S901-05J | SP BOLT DOWN TUBULAR MARKER              | 18    | EACH |  |  |

|          |                                                                                 |        |      |  |  |
|----------|---------------------------------------------------------------------------------|--------|------|--|--|
| S901-05K | SP INSTALL ORNAMENTAL POLE                                                      | 15     | EACH |  |  |
| S904-05D | SP INTELLIGENT TRANSPORTATION SYSTEM                                            | 1      | LS   |  |  |
|          | <b>SIGNING AND PAVEMENT MARKINGS</b>                                            |        |      |  |  |
| 616-010A | SIGN TYPE B-1                                                                   | 172    | SF   |  |  |
| 616-040G | STEEL SIGN POST TYPE B-2                                                        | 134    | FT   |  |  |
| 616-040K | STEEL SIGN POST TYPE E-2                                                        | 325    | FT   |  |  |
| 616-080A | REINSTALL SIGN FACE                                                             | 40     | EACH |  |  |
| 616-090A | SPECIAL INSTALL SIGN                                                            | 8      | EACH |  |  |
| 616-100A | SIGN BRACES                                                                     | 54     | LB   |  |  |
| 630-005A | TRANSVERSE, WORD, SYMBOL, AND ARROW PAVEMENT MARKINGS - WATERBORNE              | 3,500  | SF   |  |  |
| 630-010A | TRANSVERSE, WORD, SYMBOL, AND ARROW PAVEMENT MARKINGS - PREFORMED THERMOPLASTIC | 4,200  | SF   |  |  |
| 630-025A | LONGITUDINAL PAVEMENT MARKING - WATERBORNE                                      | 28,000 | FT   |  |  |
|          | <b>UTILITIES</b>                                                                |        |      |  |  |
|          | <b>STREETScape AND IRRIGATION</b>                                               |        |      |  |  |
| S901-05A | SP TREE IRRIGATION ADJUSTMENT                                                   | 13     | EACH |  |  |
| S901-05B | SP ELECTRICAL RECEPTACLE ADJUSTMENT                                             | 9      | EACH |  |  |
| S901-05C | SP POST ADJUSTMENT                                                              | 14     | EACH |  |  |
| S901-05D | SP TREE GRATES                                                                  | 32     | EACH |  |  |
| S901-05E | SP TREE (AUTUMN BLAZE MAPLE)                                                    | 38     | EACH |  |  |
| S901-05F | SP FURNISHING FOOTING                                                           | 100    | EACH |  |  |
| S901-05G | SP MODULAR SUSPENDED PAVEMENT SYSTEM (SILVA CELL)                               | 34     | EACH |  |  |
| S904-05B | SP IRRIGATION RELOCATION                                                        | 1      | LS   |  |  |
| S912-05C | SP ADJUST EXISTING SNOWMELT                                                     | 544    | SY   |  |  |
|          | <b>TEMPORARY/TRAFFIC CONTROL</b>                                                |        |      |  |  |
| Z629-05A | MOBILIZATION (≤10% OF SCHEDULE BID TOTAL)                                       | 1      | LS   |  |  |
| 675-005A | SURVEY                                                                          | 1      | LS   |  |  |
| S904-05D | SP EROSION AND SEDIMENT CONTROL                                                 | 1      | LS   |  |  |
| 107-019A | SURVEY MONUMENT PRESERVATION                                                    | 10,000 | CA   |  |  |
| 205-060A | WATER FOR DUST ABATEMENT                                                        | 2,000  | MG   |  |  |
| 626-005A | PEDESTRIAN CHANNELLING DEVICES                                                  | 1,200  | FT   |  |  |

|                                      |                                         |     |      |  |      |
|--------------------------------------|-----------------------------------------|-----|------|--|------|
| 626-010A                             | TEMPORARY TRAFFIC CONTROL SIGNS         | 135 | SF   |  |      |
| 626-025A                             | BARRICADE                               | 12  | EACH |  |      |
| 626-080A                             | TEMPORARY CURB RAMP                     | 16  | EACH |  |      |
| 626-105A                             | TEMPORARY TRAFFIC CONTROL MAINTENANCE   | 200 | HR   |  |      |
| 626-112B                             | FLOOD LIGHTS                            | 80  | DAY  |  |      |
| 626-115A                             | PORTABLE CHANGEABLE MESSAGE SIGN (PCMS) | 500 | DAY  |  |      |
| 626-120A                             | FLAGGER CONTROL                         | 400 | HR   |  |      |
| 626-125A                             | PILOT CAR                               | 100 | HR   |  |      |
| 626-135A                             | WEIGHTED BASE TUBULAR MARKERS           | 60  | EACH |  |      |
| <b>Total of Extended Unit Prices</b> |                                         |     |      |  | \$ - |

| <b>SH-75, RIVER ST TO 10TH ST - MAIN ST<br/>Additive Alternate 1 - 2<sup>nd</sup> Street</b> |                                                                |                           |             |                   |                            |
|----------------------------------------------------------------------------------------------|----------------------------------------------------------------|---------------------------|-------------|-------------------|----------------------------|
| <b>Unit Price Schedule</b>                                                                   |                                                                |                           |             |                   |                            |
| <b>Item No.</b>                                                                              | <b>Description</b>                                             | <b>Estimated Quantity</b> | <b>Unit</b> | <b>Unit Price</b> | <b>Extended Unit Price</b> |
| <b>REMOVALS</b>                                                                              |                                                                |                           |             |                   |                            |
| 2032-005A                                                                                    | REMOVAL OF OBSTRUCTIONS (RAMP AND HANDRAILS)                   | 1                         | LS          |                   |                            |
| 203-006A                                                                                     | REMOVAL OF SIGN                                                | 1                         | EACH        |                   |                            |
| 203-015A                                                                                     | REMOVAL OF BITUMINOUS SURFACE                                  | 56                        | SY          |                   |                            |
| 203-060A                                                                                     | REMOVAL OF CONCRETE SIDEWALK                                   | 55                        | SY          |                   |                            |
| 203-070A                                                                                     | REMOVAL OF CURB & GUTTER                                       | 117                       | FT          |                   |                            |
| <b>ROADWAY &amp; HARDSCAPE</b>                                                               |                                                                |                           |             |                   |                            |
| 301-005A                                                                                     | GRANULAR SUBBASE                                               | 17                        | TON         |                   |                            |
| 303-022A                                                                                     | 3/4" AGGREGATE TYPE B FOR BASE                                 | 11                        | TON         |                   |                            |
| 405-455A                                                                                     | SUPERPAVE HMA PAVEMENT INCLUDING ASPHALT & ADDITIVE CLASS SP-5 | 8                         | TON         |                   |                            |
| 614-015A                                                                                     | SIDEWALK                                                       | 114                       | SY          |                   |                            |
| 614-020A                                                                                     | DRIVEWAY                                                       | 10                        | SY          |                   |                            |
| S904-05A                                                                                     | SP CONCRETE RAMP AND STAIRS                                    | 1                         | LS          |                   |                            |
| S911-05A                                                                                     | SP 6" ROLLED CURB & GUTTER                                     | 109                       | FT          |                   |                            |
| <b>Total of Extended Unit Prices</b>                                                         |                                                                |                           |             |                   | \$                         |

- In Bid Form, after Additive Alternate 1 – 2<sup>nd</sup> Street, INSERT the Additive Alternate 2 – Fifth Street Infill and Bulbout table:

| <b>SH-75, Main St, Ketchum</b>                                |                                                                 |                           |             |                   |                            |
|---------------------------------------------------------------|-----------------------------------------------------------------|---------------------------|-------------|-------------------|----------------------------|
| <b>Additive Alternate 2 – Fifth Street Infill and Bulbout</b> |                                                                 |                           |             |                   |                            |
| <b>Unit Price Schedule</b>                                    |                                                                 |                           |             |                   |                            |
| <b>Item No.</b>                                               | <b>Description</b>                                              | <b>Estimated Quantity</b> | <b>Unit</b> | <b>Unit Price</b> | <b>Extended Unit Price</b> |
| 675-005A                                                      | SURVEY                                                          | 1                         | LS          |                   |                            |
|                                                               | <b>REMOVALS</b>                                                 |                           |             |                   |                            |
| 626-005A                                                      | PEDESTRIAN CHANNELLING DEVICES                                  | 60                        | FT          |                   |                            |
| 626-010A                                                      | TEMPORARY TRAFFIC CONTROL SIGNS                                 | 36                        | SF          |                   |                            |
| 626-025A                                                      | BARRICADE                                                       | 4                         | EACH        |                   |                            |
| 626-080A                                                      | TEMPORARY CURB RAMP                                             | 1                         | EACH        |                   |                            |
| 203-060A                                                      | REMOVAL OF CONCRETE SIDEWALK                                    | 22                        | SY          |                   |                            |
| 203-070A                                                      | REMOVAL OF CURB & GUTTER                                        | 7                         | FT          |                   |                            |
| 605-640A                                                      | ADJUST VALVE COVERS                                             | 1                         | EA          |                   |                            |
|                                                               | <b>ROADWAY &amp; HARDSCAPE</b>                                  |                           |             |                   |                            |
| 301-005A                                                      | GRANULAR SUBBASE                                                | 12                        | TON         |                   |                            |
| 303-022A                                                      | 3/4" AGGREGATE TYPE B FOR BASE                                  | 18                        | TON         |                   |                            |
| 405-455A                                                      | SUPERPAVE HMA PAVEMENT INCLUDING ASPHALT & ADDITIVES CLASS SP-5 | 30                        | TON         |                   |                            |
| 405-240A                                                      | MISCELLANEOUS PAVEMENT                                          | 91                        | SY          |                   |                            |
| 614-015A                                                      | SIDEWALK                                                        | 99                        | SY          |                   |                            |
| 619-010A                                                      | ILLUMINATION TYPE 2                                             | 1                         | LS          |                   |                            |
| S911-05A                                                      | SP 6" ROLLED CURB & GUTTER                                      | 188                       | FT          |                   |                            |
| S912-05A                                                      | SP PAVER SIDEWALK                                               | 48                        | SY          |                   |                            |
| S912-05D                                                      | SP PAVER CURB RAMP                                              | 4                         | SY          |                   |                            |
| <b>Total of Extended Unit Prices</b>                          |                                                                 |                           |             |                   | \$                         |

- In Bid Form, REPLACE section 7 as follows:

7. BASIS OF AWARD

Basis of award is the Base Bid. Owner may elect to include Additive Alternatives 1 – 2<sup>nd</sup> Street and 2 -Fifth Street Infill and Bulbout in addition to the Base Bid.

|                                                          |    |
|----------------------------------------------------------|----|
| Base Bid                                                 | \$ |
| Additive alternative 1 – 2 <sup>nd</sup> Street          | \$ |
| Additive alternative 2 – Fifth Street Infill and Bulbout | \$ |
| Total of Base Bid and Additive Alternates                | \$ |

- In Special Provisions, on Page 12, REPLACE paragraph as follows:

“ON PAGE 22, 102.07 – DELIVERY OF A PROPOSAL 04/23

Delete this subsection and add the following:

Proposals will be received via email to: tdonat@ketchumidaho.org, or if needed, in person at City Hall at 191 5th Street, Ketchum, Idaho 83340 or via mail: P.O. Box 2315, Ketchum, Idaho 83340 or until 12:00p.m., local time, on March 21, 2024. Any Bids received after the specified time will not be considered. Please include “ATTENTION: TRENT DONAT; KETCHUM MAIN STREET PROJECT – PROPOSAL” on correspondence.”

-In Special Provisions, on Page 58, ADD Bid Item S912-05D SP PAVER CURB RAMP as follows:

**“S912-05D SP PAVER CURB RAMP  
01/24**

**Description.** Provide paver curb ramps as depicted in the plans.

**Materials.**

Provide materials as specified in:

|                                                                     |          |
|---------------------------------------------------------------------|----------|
| Paver Sidewalk.....                                                 | S912-05A |
| Nonstructural Concrete (under detectable warning surface only)..... | 509      |
| Detectable Warning Surfaces .....                                   | 720.10   |

Use detectable warning surfaces consisting of truncated domes aligned in a square or radial pattern as specified. Ensure the color of detectable warning surfaces contrast visually with adjacent curb and gutter, street, or sidewalk, either light-on-dark or dark-on-light. Set detectable warning surfaces in concrete pad beneath.

**Construction Requirements.**

Grade and compact the subgrade to 90 percent of the maximum dry density as determined by AASHTO T 99. Compact aggregate base with at least 2 passes of a lightweight mechanical tamper, roller, or vibratory system.

Provide pavers as specified in S912-05A SP PAVER SIDEWALK with the following exceptions:

Ensure the detectable warning surface is securely embedded in concrete and installed in accordance with the manufacturer’s written instructions.

**Method of Measurement.** The Engineer will measure acceptably completed work by the square yard.

**Basis of Payment.** The Owner will pay for the accepted quantities at the contract unit price as follows:

| <b>Pay Item</b>    | <b>Pay Unit</b> |
|--------------------|-----------------|
| SP Paver Curb Ramp | SY              |

Aggregate bedding material is not considered incidental to the Paver Curb Ramp item and will be paid for under the respective contract pay items for ¾" aggregate base and granular subbase."

- In Special Provisions, on Page 58, ADD Bid Item S912-05E SP NEW SNOWMELT as follows:

**"S912-05E SP NEW SNOWMELT** **01/24**

**Description.** Remove and replace areas of existing snowmelt systems that require replacement due to age or condition of existing materials, need for removal of sidewalk materials or need for construction of underground landscaping and irrigation.

**Materials.** Materials will include new snowmelt tubing, wire, mats, fittings, connections and all materials required to connect to existing system.

**Construction Requirements.** Protect existing snowmelt systems not to be disturbed beneath sidewalks/pavers. Install new snowmelt systems and connect to the existing system to provide an overall operational system.

**Method of Measurement.** The Engineer will measure acceptably completed work by the square yard.

**Basis of Payment.** The Owner will pay for the accepted quantities at the contract unit price as follows:

| <b>Pay Item</b> | <b>Pay Unit</b> |
|-----------------|-----------------|
| SP New Snowmelt | SY"             |

#### DRAWINGS

-On Plan Sheets 40, 42, 44, 47, 48, 52, 57, 59, 61 of 176 -REPLACE all references of Bid Item 614-025A to S912-05D.

-On Plan Sheet 62 of 176 -REPLACE reference of Bid Item 614-025A to S912-05D for these specific call outs ONLY (other call outs referencing 614-025A remain as they are):

614-025A CURB RAMP 3 SY STA 27+60.05, 25.46' RT TO STA 27+64.92, 25.45' RT

614-025A CURB RAMP 4 SY STA 29+51.34, 32.01' RT TO STA 29+60.06, 28.99' RT

- On Plan Sheet 64 of 176 -REPLACE reference of Bid Item 614-025A to S912-05D for these specific call outs ONLY (other call outs referencing 614-025A remain as they are):

614-025A CURB RAMP 2 SY

614-025A CURB RAMP 7 SY



614-025A CURB RAMP 11 SY

614-025A CURB RAMP 8 SY

614-025A CURB RAMP 6 SY

614-025A CURB RAMP 6 SY

- On Plan Sheet 59 of 176 - REPLACE reference of Bid Item S912-05C to S912-05E for these specific call outs ONLY (other call outs referencing 614-025A remain as they are):

S912-05C SP ADJUST EXISTING SNOWMELT 60 SY

- ADD Two (2) New Sheets representing Additive Alternative 2: Fifth Street Sidewalk Infill and Bulbout.

- REPLACE plan sheets 121, 127, 133, and 139, make changes as indicated in attached modified sheets representing new work to replace the existing HAWK with an RRFB system.

- INSERT Four (4) New Sheets after Sheet 138 representing RRFB (sheet numbering to be adjusted in Conformed Drawing set).

The modifications and revised sheets identified herein must be used in developing the Contractor's Bid Proposal, unless replace, or changed in a subsequent Addendum. The most current revised Bid Form must be used to develop the Contractor's Bid Proposal. This letter must be attached to the inside back cover of the bidding proposal or provide acceptable acknowledgment.

**FAILURE TO ACKNOWLEDGE INCLUSION OF THIS ADDENDUM SHALL RENDER THE BID PROPOSAL IRREGULAR AND THE BID WILL BE REJECTED.**

Sincerely,



**Elizabeth B. Roberts, PE**  
Project Manager

## NOTICE OF LETTING

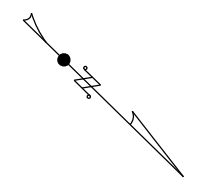
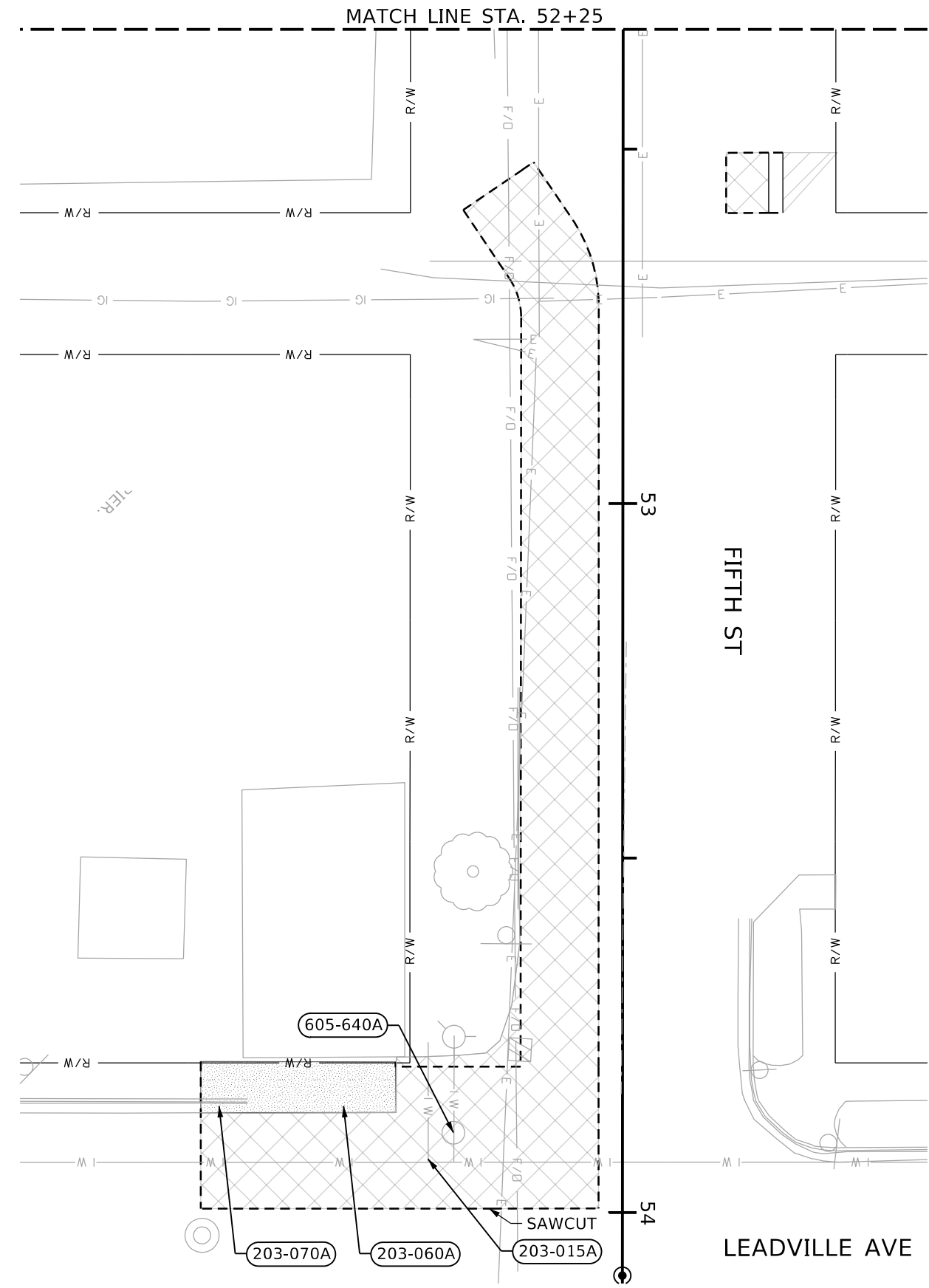
Idaho Project No. A022(210), Key No. 22210, in Blaine County; for the work of rehabilitating SH-75 – also known as Main St – between River St and 10<sup>th</sup> St through Ketchum, Idaho. Project work includes HMA resurfacing; signal upgrades; sidewalk removal and replacement, ADA ramps, curb and gutter, and bulb outs; drainage improvement and installation of pedestrian facilities on the SH-75 corridor. Work is likely to include similar improvements on two local roads (2<sup>nd</sup> St and 5<sup>th</sup> St) intersecting SH-75/Main Street between River Street and 10<sup>th</sup> Street outside of ITD right-of-way.

Sealed proposals will be received via email to: Trent Donat, [tdonat@ketchumidaho.org](mailto:tdonat@ketchumidaho.org) or if preferred, in person at City Hall at 191 5<sup>th</sup> Street, Ketchum, Idaho 83340 or via mail: P.O. Box 2315, Ketchum, Idaho 83340. Please include “ATTENTION: TRENT DONAT; KETCHUM MAIN STREET PROJECT – PROPOSAL” on correspondence. All bids must be received by 12:00pm, local time, on March 21, 2024.

ADDITIONAL INFORMATION CONTACT: MATEO FRANZOIA at (208) 383-6170 for any design related questions. Contact Ben Whipple for a site visit: (208) 726-3841.

Digital copies of the Plans, Proposals, and Specifications must be downloaded via QuestCDN.com. Bidders must appear on the plan holders list for their proposal to be accepted by the City. Please contact QuestCDN at [info@questcdninfo.com](mailto:info@questcdninfo.com) or Heather Peninger at [heather.peninger@jacobs.com](mailto:heather.peninger@jacobs.com) for assistance in downloading and working with the digital project information. Bidding documents may be examined at <https://www.ketchumidaho.org/rfps> or at the following plan room service: Associated General Contractors; 1649 West Shoreline Drive, No. 100, Boise, ID 83702, (208) 344-2531.

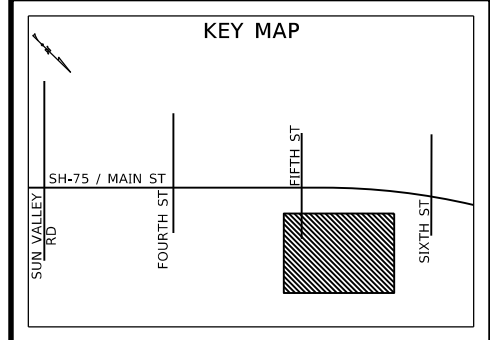
This contract requires full compliance with Title VI of the Civil Rights Act of 1964, which protects persons from being denied the benefits of or excluded from participation in programs or activities; or subjected to discrimination based on race, color, national origin, sex, age, disability, Limited English Proficiency or economic status. The Contractor is encouraged to utilize the goods and services of disadvantaged firms in accomplishing the task or providing the services of this agreement, and to provide equal opportunity to all sub-bidders and suppliers.



- 203-015A) REMOVAL OF BITUMINOUS SURFACE  
267 SY STA 52+51.85, 12.63' RT TO STA 53+99.48, 59.49' RT
- 203-060A) REMOVAL OF CONCRETE SIDEWALK  
22 SY STA 53+78.76, 32.01' RT TO STA 53+85.96, 59.49' RT
- 203-070A) REMOVAL OF CURB & GUTTER  
7 FT STA 53+85.96, 59.49' RT TO STA 53+86.03, 52.86' RT
- 605-640A) ADJUST VALVE COVERS  
1 EA STA 53+78.76, 32.01' RT

**LEGEND:**

- SAWCUT PAVEMENT
- [Stippled Box] 203-001A REMOVAL OF OBSTRUCTIONS (PAVERS)
- [Cross-hatched Box] 203-015A REM OF BITUMINOUS SURF
- [Diagonal-hatched Box] 203-060A REM OF CONC SIDEWALK



1

| REVISIONS |          |    |             |
|-----------|----------|----|-------------|
| NO        | DATE     | BY | DESCRIPTION |
| 1         | 3/8/2024 | MF | ADDENDUM 1  |
|           |          |    |             |
|           |          |    |             |
|           |          |    |             |

|                                |                                                                                                                               |
|--------------------------------|-------------------------------------------------------------------------------------------------------------------------------|
| DESIGNED<br>M. FRANZOIA        | SCALES SHOWN ARE FOR 11" X 17" PRINTS ONLY<br><br>CADD FILE NAME<br>22210.REM 008B.dgn<br><br>DRAWING DATE:<br>March 08, 2024 |
| DESIGN CHECKED<br>C. GUTHRIE   |                                                                                                                               |
| DETAILED<br>H. JOHNSON         |                                                                                                                               |
| DRAWING CHECKED<br>M. FRANZOIA |                                                                                                                               |

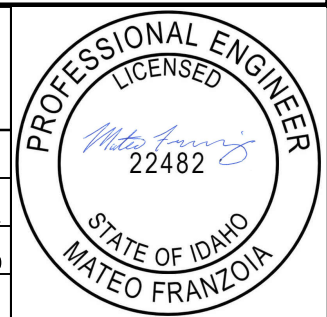
**IDAHO TRANSPORTATION DEPARTMENT**  
 YOUR Safety - YOUR Mobility - YOUR Economic Opportunity

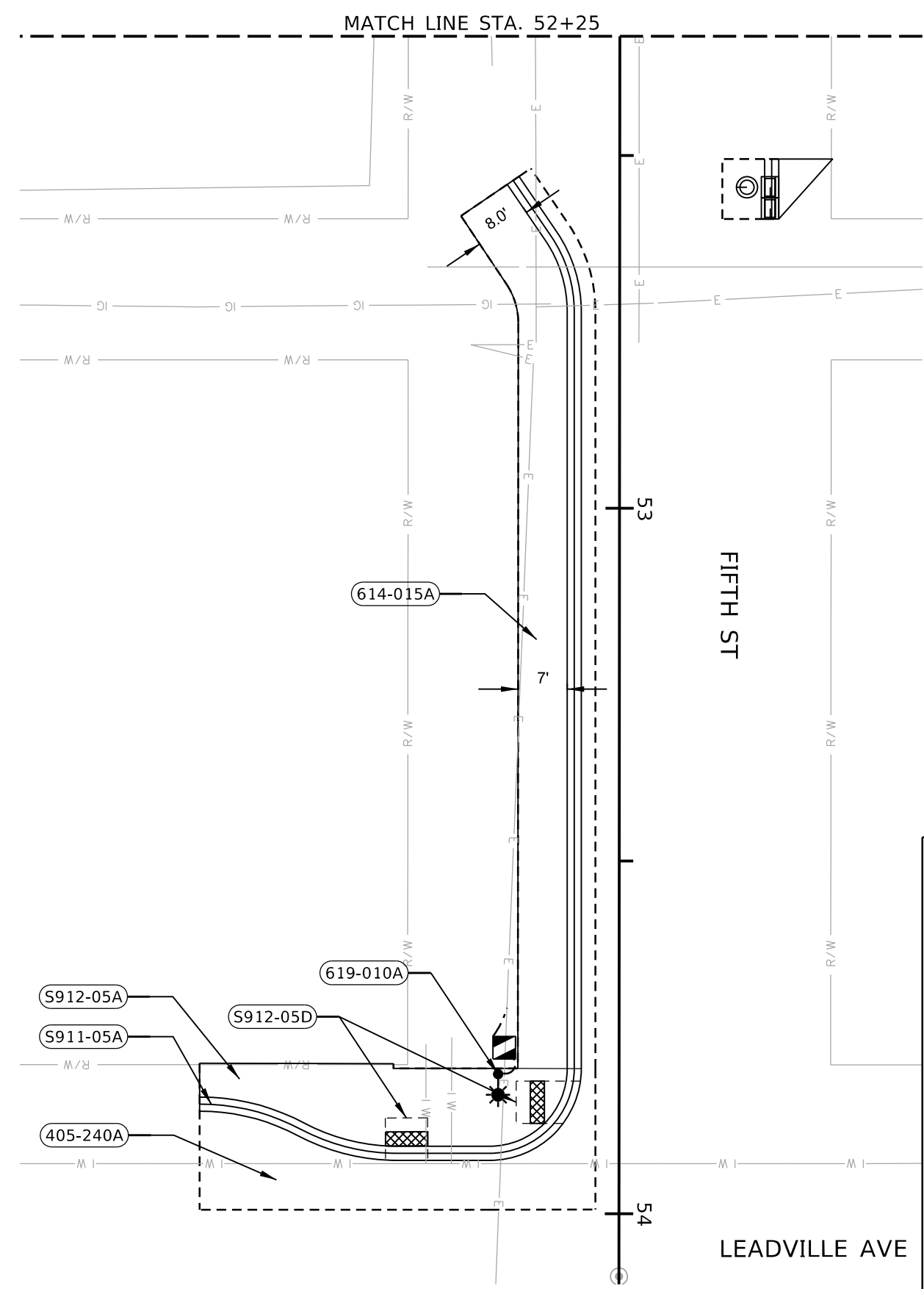
Jacobs

|                              |
|------------------------------|
| PROJECT NO.<br><br>A022(210) |
|------------------------------|

|                                                                       |
|-----------------------------------------------------------------------|
| REMOVAL SHEET<br>SH-75 - MAIN ST<br>KETCHUM<br>STA 52+25 TO STA 54+10 |
|-----------------------------------------------------------------------|

|                     |
|---------------------|
| <b>ENGLISH</b>      |
| COUNTY<br>BLAINE    |
| KEY NUMBER<br>22210 |
| SHEET 00 OF 100     |





|                 |                            |        |                                                    |
|-----------------|----------------------------|--------|----------------------------------------------------|
| <b>405-240A</b> | MISC PAVEMENT              | 91 SY  | STA 52+51.85, 12.63' RT TO STA 53+99.48, 59.49' RT |
| <b>614-015A</b> | SIDEWALK                   | 99 SY  | STA 52+54.10, 15.94' RT TO STA 53+79.43, 14.38' LT |
| <b>S911-05A</b> | SP 6" ROLLED CURB & GUTTER | 188 FT | STA 52+54.10, 15.94' RT TO STA 53+83.50, 59.49' RT |
| <b>S912-05A</b> | SP PAVER SIDEWALK          | 48 SY  | STA 53+79.43, 14.38' RT TO STA 53+83.50, 59.49' RT |
| <b>S912-05D</b> | SP PAVER CURB RAMP         | 2 SY   | STA 53+81.23, 14.60' RT TO STA 53+87.23, 14.59' RT |
|                 |                            | 2 SY   | STA 53+86.44, 27.15' RT TO STA 53+86.46, 33.15' RT |
| <b>619-010A</b> | ILLUMINATION TYPE 2        | 1 LS   | STA 53+80.22, 17.17' RT                            |

**ILLUMINATION TYPE 2: CONTRACTOR SUPPLIED MATERIALS**

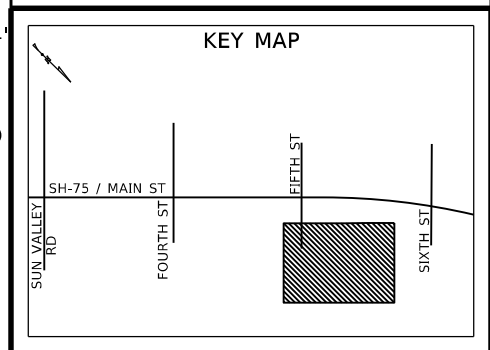
1 EACH **POLE**: GALVANIZED STEEL, LUMINAIRE POLE, BREAKAWAY BASE, NOMINAL MOUNTING HEIGHT 25' PER CITY OF KETCHUM STANDARDS AND AS SHOWN WITH IN PLAN SET.

1 EACH **POLE FOUNDATION**. REINFORCED CONCRETE, 2' x 4'

1 EACH **LUMINAIRE**. PER CITY OF KETCHUM LIGHTING STANDARDS.

1 EACH **JUNCTION BOX**. CONCRETE, SIZE C. WITH DIAMOND PLATE STEEL TRAFFIC RATED LIDS AND "LIGHTING" LOGO IMPRINTED ON THE LID.

**EUSE.**  
**SPLICE KIT.**  
**MISCELLANEOUS:** TO INCLUDE THWN STRANDED COPPER WIRE, 2" RPC, HAZARD WARNING TAPE AND VARIOUS OTHER ITEMS, HARDWARE, AND FITTINGS FOR A COMPLETE INSTALLATION AS DEPICTED WITH THE PLANS AND RECOMMENDED BY THE MANUFACTURER.



1

| REVISIONS |          |    |             |
|-----------|----------|----|-------------|
| NO        | DATE     | BY | DESCRIPTION |
| 1         | 3/8/2024 | MF | ADDENDUM 1  |
|           |          |    |             |
|           |          |    |             |

DESIGNED  
M. FRANZOIA

DESIGN CHECKED  
C. GUTHRIE

DETAILED  
H. JOHNSON

DRAWING CHECKED  
M. FRANZOIA

SCALES SHOWN ARE FOR 11" X 17" PRINTS ONLY

CADD FILE NAME  
22210 PLAN 008B.dwg

DRAWING DATE:  
March 08, 2024

**IDAHO TRANSPORTATION DEPARTMENT**  
 YOUR Safety → YOUR Mobility → YOUR Economic Opportunity

**Jacobs**

PROJECT NO.  
A022(210)

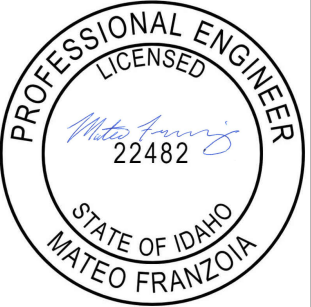
PLAN SHEET  
SH-75 - MAIN ST  
KETCHUM  
STA 52+25 TO STA 54+10

**ENGLISH**

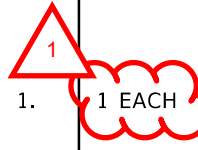
COUNTY  
BLAINE

KEY NUMBER  
22210

SHEET 03 OF 170



| ITEM                                    | QTY.    | DESCRIPTION                                                                                                                                                                                                                          | ITEM                                                | QTY.    | DESCRIPTION                                                                                                                                                                                                                                                                                                                                                                                                                              |
|-----------------------------------------|---------|--------------------------------------------------------------------------------------------------------------------------------------------------------------------------------------------------------------------------------------|-----------------------------------------------------|---------|------------------------------------------------------------------------------------------------------------------------------------------------------------------------------------------------------------------------------------------------------------------------------------------------------------------------------------------------------------------------------------------------------------------------------------------|
| ITEM 619-010A ILLUMINATION TYPE 2       |         |                                                                                                                                                                                                                                      | ITEM 904-05D INTELLIGENT TRANSPORTATION SYSTEM      |         |                                                                                                                                                                                                                                                                                                                                                                                                                                          |
| CONTRACTOR SUPPLIED MATERIALS           |         |                                                                                                                                                                                                                                      | CONTRACTOR SUPPLIED MATERIALS                       |         |                                                                                                                                                                                                                                                                                                                                                                                                                                          |
| 1.                                      | 9 EACH  | <u>POLE</u> : GALVANIZED STEEL, LUMINAIRE POLE, BREAKAWAY BASE, NOMINAL MOUNTING HEIGHT 25' PER CITY OF KETCHUM STANDARDS AND AS SHOWN WITH IN PLAN SET.                                                                             | 1.                                                  | 3480 LF | <u>48-FIBER CABLE</u> . TO INCLUDE FIBER OPTIC CABLE AND TESTING FOR ACCEPTANCE. QUANTITY INCLUDES 25-FOOT OF FIBER CABLE SLACK AT ITS SPLICE VAULTS.                                                                                                                                                                                                                                                                                    |
| 2.                                      | 9 EACH  | <u>POLE FOUNDATION</u> . REINFORCED CONCRETE, 2' x 4'.                                                                                                                                                                               | 2.                                                  | 190 LF  | <u>12-FIBER CABLE</u> . TO INCLUDE FIBER OPTIC CABLE AND TESTING FOR ACCEPTANCE. QUANTITY INCLUDES 15-FOOT OF FIBER CABLE SLACK AT TRAFFIC SIGNAL CONTROLLER.                                                                                                                                                                                                                                                                            |
| 3.                                      | 9 EACH  | <u>LUMINAIRE</u> . PER CITY OF KETCHUM LIGHTING STANDARDS.                                                                                                                                                                           | 3.                                                  | 3380 LF | <u>CONDUIT 2"</u> . RIGID PLASTIC CONDUIT, SCHEDULE 80.                                                                                                                                                                                                                                                                                                                                                                                  |
| 4.                                      | 9 EACH  | <u>JUNCTION BOX</u> . CONCRETE, SIZE C. WITH DIAMOND PLATE STEEL TRAFFIC RATED LIDS AND "LIGHTING" LOGO IMPRINTED ON THE LID.                                                                                                        | 4.                                                  | 17 EACH | <u>JUNCTION BOX</u> . CONCRETE, SIZE C. WITH DIAMOND PLATE STEEL TRAFFIC RATED LIDS AND "ITS" LOGO IMPRINTED ON THE LID.                                                                                                                                                                                                                                                                                                                 |
| 5.                                      | 9 EACH  | <u>FUSE</u> .                                                                                                                                                                                                                        | 5.                                                  | 3 EACH  | <u>FIBER TERMINATION</u> . INCLUDES FIBER SPLICE ENCLOSURE, TERMINATION INTO THE TRAFFIC SIGNAL CONTROLLER, AND TESTING FOR ACCEPTANCE.                                                                                                                                                                                                                                                                                                  |
| 6.                                      | 9 EACH  | <u>SPLICE KIT</u> .                                                                                                                                                                                                                  | 6.                                                  | 2 EACH  | <u>ITS SPLICE VAULT</u> . CONCRETE, WITH DIAMOND PLATE STEEL TRAFFIC RATED LIDS AND "ITS" LOGO IMPRINTED ON THE LID.                                                                                                                                                                                                                                                                                                                     |
| 7.                                      | VARIOUS | <u>MISCELLANEOUS</u> : TO INCLUDE THWN STRANDED COPPER WIRE, 2" RPC, HAZARD WARNING TAPE AND VARIOUS OTHER ITEMS, HARDWARE, AND FITTINGS FOR A COMPLETE INSTALLATION AS DEPICTED WITH THE PLANS AND RECOMMENDED BY THE MANUFACTURER. | 7.                                                  | VARIOUS | <u>MISCELLANEOUS</u> : TO INCLUDE LOCATE WIRES, EXTENDING OF EXISTING CONDUIT AND VARIOUS OTHER ITEMS, HARDWARE, AND FITTINGS FOR A COMPLETE INSTALLATION AS DEPICTED WITH THE PLANS AND RECOMMENDED BY THE MANUFACTURER.                                                                                                                                                                                                                |
| ITEM 587-005A PAINTING STRUCTURAL STEEL |         |                                                                                                                                                                                                                                      | ITEM 657-02A RRFB, SOLAR POWERED                    |         |                                                                                                                                                                                                                                                                                                                                                                                                                                          |
| CONTRACTOR SUPPLIED MATERIALS           |         |                                                                                                                                                                                                                                      | ITEMS FURNISHED BY CITY AND INSTALLED BY CONTRACTOR |         |                                                                                                                                                                                                                                                                                                                                                                                                                                          |
| 1.                                      | 1 LS    | <u>IN-FIELD SIGNAL POLE PAINTING</u> . TO INCLUDE SURFACE PREPARATION OF POLE AND EQUIPMENT AND TWO COATS OF PAINT IN SPECIFIED COLOR.                                                                                               | 1.                                                  | 1 EACH  | <u>RECTANGULAR RAPID FLASHING BEACONS</u> . CITY OF KETCHUM TO SUPPLY FULLY FUNCTIONAL RRFB ASSEMBLY, INCLUDING BUT NOT LIMITED TO STEEL POLES, WARNING SIGNS, RRFB, CONTROLLER, AND SOLAR PANELS. CONTRACTOR TO INSTALL PEDESTRIAN SIGNAL POLE, TYPE A FOUNDATION PER ITD STANDARDS AND INSTALL REMAINING EQUIPMENT. OTHER VARIOUS ITEMS, HARDWARE AND FITTINGS NECESSARY FOR A COMPLETE SYSTEM ARE CONSIDERED PART OF THE RRFB SYSTEM. |
| ITEM S901-05K INSTALL ORNAMENTAL POLE   |         |                                                                                                                                                                                                                                      | CONTRACTOR SUPPLIED MATERIALS                       |         |                                                                                                                                                                                                                                                                                                                                                                                                                                          |
| 1.                                      | 15 EACH | <u>ORNAMENTAL POLE</u> . TO INCLUDE INSTALLATION OF ORNAMENTAL LIGHT POLES AS SHOWN IN THE LANDSCAPING PLANS. ITEM INCLUDES LUMINAIRE POLE, POLE FOUNDATION, AND BREAKAWAY BASE.                                                     | 1.                                                  | 15 EACH | <u>ORNAMENTAL POLE</u> . TO INCLUDE INSTALLATION OF ORNAMENTAL LIGHT POLES AS SHOWN IN THE LANDSCAPING PLANS. ITEM INCLUDES LUMINAIRE POLE, POLE FOUNDATION, AND BREAKAWAY BASE.                                                                                                                                                                                                                                                         |
| 2.                                      | VARIOUS | <u>MISCELLANEOUS</u> : TO INCLUDE THWN STRANDED COPPER WIRE, 2" RPC, HAZARD WARNING TAPE AND VARIOUS OTHER ITEMS, HARDWARE, AND FITTINGS FOR A COMPLETE INSTALLATION AS DEPICTED WITH THE PLANS OR RECOMMENDED BY THE MANUFACTURER.  | 2.                                                  | VARIOUS | <u>MISCELLANEOUS</u> : TO INCLUDE THWN STRANDED COPPER WIRE, 2" RPC, HAZARD WARNING TAPE AND VARIOUS OTHER ITEMS, HARDWARE, AND FITTINGS FOR A COMPLETE INSTALLATION AS DEPICTED WITH THE PLANS OR RECOMMENDED BY THE MANUFACTURER.                                                                                                                                                                                                      |



| REVISIONS |          |    |             |
|-----------|----------|----|-------------|
| NO        | DATE     | BY | DESCRIPTION |
| 1         | 3/8/2024 | AG | ADDENDUM 1  |
|           |          |    |             |
|           |          |    |             |

|                 |           |                                               |
|-----------------|-----------|-----------------------------------------------|
| DESIGNED        | M. HEUGH  | SCALES SHOWN ARE FOR 11" X 17" PRINTS ONLY    |
| DESIGN CHECKED  | A. GROVER |                                               |
| DETAILED        | M. HEUGH  | CADD FILE NAME<br>22210 ITS & ILL Mat 001.dgn |
| DRAWING CHECKED | A. GROVER | DRAWING DATE:<br>March 08, 2024               |



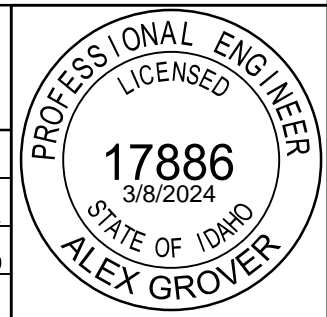
**IDAHO TRANSPORTATION DEPARTMENT**  
 YOUR Safety - YOUR Mobility - YOUR Economic Opportunity



**Jacobs**

|             |                                   |
|-------------|-----------------------------------|
| PROJECT NO. | ITS & ILLUMINATION MATERIALS LIST |
| A022(210)   | SH-75 - MAIN ST<br>KETCHUM        |

|                  |
|------------------|
| <b>ENGLISH</b>   |
| COUNTY BLAINE    |
| KEY NUMBER 22210 |
| SHEET 121 OF 176 |



| ITEM                                                | QTY.                | DESCRIPTION                                                                                                                                                                                                                                                                                                                                                                                                                                                         | ITEM                                                  | QTY.     | DESCRIPTION                                                                                                                                                                                                                                                                                                                                                                                                                                                                                                                                                                        |        |         |        |                  |              |                 |  |        |                     |              |                 |  |        |                    |              |                     |  |                               |  |  |
|-----------------------------------------------------|---------------------|---------------------------------------------------------------------------------------------------------------------------------------------------------------------------------------------------------------------------------------------------------------------------------------------------------------------------------------------------------------------------------------------------------------------------------------------------------------------|-------------------------------------------------------|----------|------------------------------------------------------------------------------------------------------------------------------------------------------------------------------------------------------------------------------------------------------------------------------------------------------------------------------------------------------------------------------------------------------------------------------------------------------------------------------------------------------------------------------------------------------------------------------------|--------|---------|--------|------------------|--------------|-----------------|--|--------|---------------------|--------------|-----------------|--|--------|--------------------|--------------|---------------------|--|-------------------------------|--|--|
| ITEM 656-010A SIGNAL HOUSING                        |                     |                                                                                                                                                                                                                                                                                                                                                                                                                                                                     | ITEM 656-020E INTERSECTION DETECTION SYSTEM - THERMAL |          |                                                                                                                                                                                                                                                                                                                                                                                                                                                                                                                                                                                    |        |         |        |                  |              |                 |  |        |                     |              |                 |  |        |                    |              |                     |  |                               |  |  |
| CONTRACTOR SUPPLIED MATERIALS                       |                     |                                                                                                                                                                                                                                                                                                                                                                                                                                                                     | CONTRACTOR SUPPLIED MATERIALS                         |          |                                                                                                                                                                                                                                                                                                                                                                                                                                                                                                                                                                                    |        |         |        |                  |              |                 |  |        |                     |              |                 |  |        |                    |              |                     |  |                               |  |  |
| 1.                                                  | 4 EACH              | L.E.D. TRAFFIC SIGNAL HEAD: FOUR-SECTION VERTICAL, 12", EMPTY, POLYCARBONATE, TO BE MCCAIN MODEL NO. M32700, MOBOTREX MODEL NO. SGXXXX OR APPROVED EQUAL.                                                                                                                                                                                                                                                                                                           | 1.                                                    | 1 EACH   | THERMAL DETECTION SYSTEM. TO BE FLIR TRAFIONE, OR APPROVED EQUAL. THE DETECTION SYSTEM SHALL INCLUDE 4 DETECTION UNITS AND APPROPRIATE MOUNTING BRACKETS AND COMPONENTS NECESSARY FOR PEDESTRIAN DETECTION AND SIGNAL OPERATIONS. MOUNTING BRACKETS, CABLE, CABLE PULLING, CABINET WIRING, WIRING HARNESSSES AND OTHER MISCELLANEOUS HARDWARE ARE CONSIDERED PART OF THE DETECTION SYSTEM.                                                                                                                                                                                         |        |         |        |                  |              |                 |  |        |                     |              |                 |  |        |                    |              |                     |  |                               |  |  |
| 2.                                                  | 16 EACH             | L.E.D. HEADS. PROVIDE L.E.D. TRAFFIC SIGNAL MODULES WITH QUICK DISCONNECT LEADS, 12" IN DIAMETER, SMOOTH LENS SURFACE, 120 VAC, NON PIXILATED ("INCANDESCENT-LOOK"). RED AND YELLOW BALL LIGHTS ARE TO BE TINTED, AND GREEN BALL LIGHTS ARE TO BE CLEAR. RED AND YELLOW ARROW LIGHTS MAY BE TINTED OR CLEAR, AND GREEN ARROW LIGHTS ARE TO BE CLEAR. ALL L.E.D. MODULES MUST BE ITE CERTIFIED. TO BE THE FOLLOWING OR APPROVED EQUAL:                               | ITEM 656-035A INTERSECTION PEDESTRIAN SYSTEM          |          |                                                                                                                                                                                                                                                                                                                                                                                                                                                                                                                                                                                    |        |         |        |                  |              |                 |  |        |                     |              |                 |  |        |                    |              |                     |  |                               |  |  |
|                                                     |                     | <table border="0"> <tr> <td></td> <td>DIALIGHT</td> <td>EQI</td> <td>LEOTEK</td> <td>TRASTAR</td> </tr> <tr> <td>4 EACH</td> <td>L.E.D. RED ARROW</td> <td>432-1314-001</td> <td>TSL-12RA-IL6-A1</td> <td></td> </tr> <tr> <td>8 EACH</td> <td>L.E.D. YELLOW ARROW</td> <td>431-3334-001</td> <td>TSL-12YA-IL6-A1</td> <td></td> </tr> <tr> <td>4 EACH</td> <td>L.E.D. GREEN ARROW</td> <td>432-2374-001</td> <td>TSL-12GA-IL6-A1-CLR</td> <td></td> </tr> </table> |                                                       | DIALIGHT | EQI                                                                                                                                                                                                                                                                                                                                                                                                                                                                                                                                                                                | LEOTEK | TRASTAR | 4 EACH | L.E.D. RED ARROW | 432-1314-001 | TSL-12RA-IL6-A1 |  | 8 EACH | L.E.D. YELLOW ARROW | 431-3334-001 | TSL-12YA-IL6-A1 |  | 4 EACH | L.E.D. GREEN ARROW | 432-2374-001 | TSL-12GA-IL6-A1-CLR |  | CONTRACTOR SUPPLIED MATERIALS |  |  |
|                                                     | DIALIGHT            | EQI                                                                                                                                                                                                                                                                                                                                                                                                                                                                 | LEOTEK                                                | TRASTAR  |                                                                                                                                                                                                                                                                                                                                                                                                                                                                                                                                                                                    |        |         |        |                  |              |                 |  |        |                     |              |                 |  |        |                    |              |                     |  |                               |  |  |
| 4 EACH                                              | L.E.D. RED ARROW    | 432-1314-001                                                                                                                                                                                                                                                                                                                                                                                                                                                        | TSL-12RA-IL6-A1                                       |          |                                                                                                                                                                                                                                                                                                                                                                                                                                                                                                                                                                                    |        |         |        |                  |              |                 |  |        |                     |              |                 |  |        |                    |              |                     |  |                               |  |  |
| 8 EACH                                              | L.E.D. YELLOW ARROW | 431-3334-001                                                                                                                                                                                                                                                                                                                                                                                                                                                        | TSL-12YA-IL6-A1                                       |          |                                                                                                                                                                                                                                                                                                                                                                                                                                                                                                                                                                                    |        |         |        |                  |              |                 |  |        |                     |              |                 |  |        |                    |              |                     |  |                               |  |  |
| 4 EACH                                              | L.E.D. GREEN ARROW  | 432-2374-001                                                                                                                                                                                                                                                                                                                                                                                                                                                        | TSL-12GA-IL6-A1-CLR                                   |          |                                                                                                                                                                                                                                                                                                                                                                                                                                                                                                                                                                                    |        |         |        |                  |              |                 |  |        |                     |              |                 |  |        |                    |              |                     |  |                               |  |  |
| 3.                                                  | 4 EACH              | TRAFFIC SIGNAL BACK PLATE, 5" METAL, FLAT BACK FINISH ON THE FRONT AND SIGNAL GREEN ON THE BACK WITH 3" YELLOW RETROREFLECTIVE BORDER. BORDER TO BE FACTORY APPLIED, FOR THREE SECTION VERTICAL HEADS. TO BE ECONOLITE OR APPROVED EQUAL.                                                                                                                                                                                                                           | 1.                                                    | 8 EACH   | PEDESTRIAN SIGNAL HEAD. HOUSING TO BE 18"x18" TRAFFIC OLIVE GREEN WITH POWDER-COATED ALUMINUM EXTERIOR. SIGNAL HEAD TO BE 16" LED COUNTDOWN HAND/MAN (DIALIGHT, LEOTEK OR APPROVED EQUAL).                                                                                                                                                                                                                                                                                                                                                                                         |        |         |        |                  |              |                 |  |        |                     |              |                 |  |        |                    |              |                     |  |                               |  |  |
| 4.                                                  | 16 EACH             | TRAFFIC SIGNAL VISOR, 12" METAL TUNNEL VISORS, TO BE ECONOLITE OR APPROVED EQUAL.                                                                                                                                                                                                                                                                                                                                                                                   | 2.                                                    | 4 EACH   | PEDESTRIAN SIGNAL BRACKET, DOUBLE, FOR SIDE OF POLE MOUNTING OF ONE-WAY 16" PEDESTRIAN SIGNAL HEAD. TO BE MCCAIN, PELCO OR APPROVED EQUAL.                                                                                                                                                                                                                                                                                                                                                                                                                                         |        |         |        |                  |              |                 |  |        |                     |              |                 |  |        |                    |              |                     |  |                               |  |  |
| 5.                                                  | 2 EACH              | TRAFFIC SIGNAL MOUNTING BRACKET FOR MAST ARM MOUNTING OF FOUR SECTION HEADS PELCO MODEL NO. AS-XXXX-X-XX, SKY BRACKET SS-SBCXX-XX OR APPROVED EQUAL.                                                                                                                                                                                                                                                                                                                | 3.                                                    | 8 EACH   | APS PEDESTRIAN PUSH BUTTON TO INCLUDE 9"x15" MOUNTING ASSEMBLY, PUSH BUTTON, AND 9"x15" SIGN DECAL. TO BE POLARA, CAMPBELL OR APPROVED EQUAL.                                                                                                                                                                                                                                                                                                                                                                                                                                      |        |         |        |                  |              |                 |  |        |                     |              |                 |  |        |                    |              |                     |  |                               |  |  |
| 6.                                                  | 2 EACH              | TRAFFIC SIGNAL MOUNTING BRACKET FOR SIDE OF POST MOUNTING TERMINAL COMPARTMENT MOUNTING TO BE ECONOLITE FWA2114AG, WESTERN SYSTEM FRAMEWORKS OR APPROVED EQUAL.                                                                                                                                                                                                                                                                                                     | ITEM 656-040A SIGNAL CABINET                          |          |                                                                                                                                                                                                                                                                                                                                                                                                                                                                                                                                                                                    |        |         |        |                  |              |                 |  |        |                     |              |                 |  |        |                    |              |                     |  |                               |  |  |
| ITEM 656-020B INTERSECTION DETECTION SYSTEM - RADAR |                     |                                                                                                                                                                                                                                                                                                                                                                                                                                                                     | ITEM FURNISHED BY CITY INSTALLED BY CONTRACTOR        |          |                                                                                                                                                                                                                                                                                                                                                                                                                                                                                                                                                                                    |        |         |        |                  |              |                 |  |        |                     |              |                 |  |        |                    |              |                     |  |                               |  |  |
| CONTRACTOR SUPPLIED MATERIALS                       |                     |                                                                                                                                                                                                                                                                                                                                                                                                                                                                     | CONTRACTOR SUPPLIED MATERIALS                         |          |                                                                                                                                                                                                                                                                                                                                                                                                                                                                                                                                                                                    |        |         |        |                  |              |                 |  |        |                     |              |                 |  |        |                    |              |                     |  |                               |  |  |
| 1.                                                  | 1 EACH              | RADAR DETECTION SYSTEM TO BE ECONOLITE EVO, OR APPROVED EQUAL. THE DETECTION SYSTEM SHALL INCLUDE 4 DETECTION UNITS AND APPROPRIATE MOUNTING BRACKETS AND COMPONENTS NECESSARY FOR SIGNAL OPERATIONS. MOUNTING BRACKETS, CABLE, CABLE PULLING, CABINET WIRING, WIRING HARNESSSES AND OTHER MISCELLANEOUS HARDWARE ARE CONSIDERED PART OF THE DETECTION SYSTEM.                                                                                                      | 1.                                                    | 1 EACH   | SIGNAL CABINET: ECONOLITE CONTROLLER CABINET STRETCHED-P WITH ZINC BLUE BATTERY BACKUP SYSTEM AND GENERATOR PORT OR WESTERN SYSTEMS P-PLUS STRETCH WITH ALPHA BATTERY BACKUP AND GENERATOR PORT. SUPPLY A SIGNAL CABINET DOOR SENSOR AND HAVE IT WIRED TO THE SIGNAL CONTROLLER. FRONT AND BACK DOOR TO BE LEFT-HAND OUTSWING AND CABINET ORIENTED WITH FRONT DOOR FACING OPPOSITE OF TRAFFIC. ANY SIDE DOOR IS TO HAVE ADEQUATE CLEARANCE TO OPEN WITH RIGHT-HAND OUTSWING. INCLUDE ALL RELATED EQUIPMENT, RELAYS, LOAD SWITCHES AND ANCHOR BOLTS NEEDED FOR PROPER INSTALLATION. |        |         |        |                  |              |                 |  |        |                     |              |                 |  |        |                    |              |                     |  |                               |  |  |
| ITEM 656-020C INTERSECTION DETECTION SYSTEM - VIDEO |                     |                                                                                                                                                                                                                                                                                                                                                                                                                                                                     | ITEM 656-045A SIGNAL CONTROLLER                       |          |                                                                                                                                                                                                                                                                                                                                                                                                                                                                                                                                                                                    |        |         |        |                  |              |                 |  |        |                     |              |                 |  |        |                    |              |                     |  |                               |  |  |
| CONTRACTOR SUPPLIED MATERIALS                       |                     |                                                                                                                                                                                                                                                                                                                                                                                                                                                                     | CONTRACTOR SUPPLIED MATERIALS                         |          |                                                                                                                                                                                                                                                                                                                                                                                                                                                                                                                                                                                    |        |         |        |                  |              |                 |  |        |                     |              |                 |  |        |                    |              |                     |  |                               |  |  |
| 1.                                                  | 1 EACH              | FISHEYE VIDEO DETECTOR TO BE GRIDSMART FISHEYE CAMERA, OR APPROVED EQUAL. INCLUDES BELL CAMERA, JUCTION BOX, CUSTOM MODULAR POLE ASSEMBLY WITH EXTENSION ARM AND 3-FOOT ELBOW, REPEATERS AND SMARTMOUNT BRACKET.                                                                                                                                                                                                                                                    | 1.                                                    | 1 EACH   | SIGNAL CONTROLLER. ECONOLITE COBALT CONTROLLER COMPATIBLE WORKING WITH ECONOLITE CENTRACS SOFTWARE, EQUIPPED WITH THE ABILITY TO UTILIZE A DATA KEY, AND HAVE TECHNICAL SETUP PROVIDED FOR INSTALLATION AND INITIAL SETUP.                                                                                                                                                                                                                                                                                                                                                         |        |         |        |                  |              |                 |  |        |                     |              |                 |  |        |                    |              |                     |  |                               |  |  |
| 2.                                                  | VARIOUS             | MISCELLANEOUS ITEMS. TO INCLUDE MOUNTAIN KIT, ELECTRONIC PROTECTION MODULE (EPM), CAT 5e CABLING AND ALL NECESSARY HARDWARE AND SOFTWARE FOR A COMPLETE INSTALLATION TO SERVICE INTERSECTION APPROACHES AND SHOWN ON THE PLANS.                                                                                                                                                                                                                                     | 2.                                                    | 1 EACH   | ETHERNET SWITCH: USE CISCO SWITCH MODEL NO. IE-3200-8P2S-E ETHERNET SWITCH. USE THIS SWITCH IN PLACE OF THE ETHERNET SWITCH TYPICALLY PROVIDED WITH THE WESTERN SYSTEMS SIGNAL CABINET.                                                                                                                                                                                                                                                                                                                                                                                            |        |         |        |                  |              |                 |  |        |                     |              |                 |  |        |                    |              |                     |  |                               |  |  |
|                                                     |                     |                                                                                                                                                                                                                                                                                                                                                                                                                                                                     | 3.                                                    | 1 EACH   | MMU. USE EDI TRAFFIC OR ECONOLITE MMU2-16LE(IP) SMART MONITOR SIGNAL CONTROLLER WITH ETHERNET.                                                                                                                                                                                                                                                                                                                                                                                                                                                                                     |        |         |        |                  |              |                 |  |        |                     |              |                 |  |        |                    |              |                     |  |                               |  |  |

| REVISIONS |          |    |             |
|-----------|----------|----|-------------|
| NO        | DATE     | BY | DESCRIPTION |
| 1         | 3/8/2024 | AG | ADDENDUM 1  |
|           |          |    |             |
|           |          |    |             |

|                 |           |                                             |
|-----------------|-----------|---------------------------------------------|
| DESIGNED        | M. HEUGH  | SCALES SHOWN ARE FOR 11" X 17" PRINTS ONLY  |
| DESIGN CHECKED  | A. GROVER |                                             |
| DETAILED        | M. HEUGH  | CADD FILE NAME<br>22210_SGL_Mat_001.dgn.DGN |
| DRAWING CHECKED | A. GROVER | DRAWING DATE:<br>March 08, 2024             |



**IDAHO TRANSPORTATION DEPARTMENT**  
YOUR Safety - YOUR Mobility - YOUR Economic Opportunity

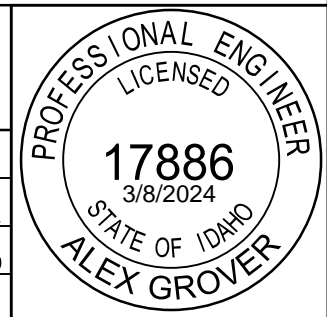


**Jacobs**

|             |           |
|-------------|-----------|
| PROJECT NO. | A022(210) |
|-------------|-----------|

|                               |                                        |
|-------------------------------|----------------------------------------|
| TRAFFIC SIGNAL MATERIALS LIST | SH-75 - MAIN ST<br>KETCHUM<br>FIRST ST |
|-------------------------------|----------------------------------------|

|            |            |
|------------|------------|
| ENGLISH    |            |
| COUNTY     | BLAINE     |
| KEY NUMBER | 22210      |
| SHEET      | 127 OF 176 |



| ITEM                                                          | QTY.                | DESCRIPTION                                                                                                                                                                                                                                                                                                                                                                                                                                                                                                                                                                                                                                                                                                                                                                                                                                                                                                                                                                                                                   |                 |                          |            |               |                |        |                 |                |               |                      |        |                    |                |               |                      |        |                   |                |                 |                          |        |                  |              |  |                 |        |                     |              |  |                 |        |                    |              |  |                     |
|---------------------------------------------------------------|---------------------|-------------------------------------------------------------------------------------------------------------------------------------------------------------------------------------------------------------------------------------------------------------------------------------------------------------------------------------------------------------------------------------------------------------------------------------------------------------------------------------------------------------------------------------------------------------------------------------------------------------------------------------------------------------------------------------------------------------------------------------------------------------------------------------------------------------------------------------------------------------------------------------------------------------------------------------------------------------------------------------------------------------------------------|-----------------|--------------------------|------------|---------------|----------------|--------|-----------------|----------------|---------------|----------------------|--------|--------------------|----------------|---------------|----------------------|--------|-------------------|----------------|-----------------|--------------------------|--------|------------------|--------------|--|-----------------|--------|---------------------|--------------|--|-----------------|--------|--------------------|--------------|--|---------------------|
| <b>ITEM 656-010A SIGNAL HOUSING</b>                           |                     |                                                                                                                                                                                                                                                                                                                                                                                                                                                                                                                                                                                                                                                                                                                                                                                                                                                                                                                                                                                                                               |                 |                          |            |               |                |        |                 |                |               |                      |        |                    |                |               |                      |        |                   |                |                 |                          |        |                  |              |  |                 |        |                     |              |  |                 |        |                    |              |  |                     |
| <b>CONTRACTOR SUPPLIED MATERIALS</b>                          |                     |                                                                                                                                                                                                                                                                                                                                                                                                                                                                                                                                                                                                                                                                                                                                                                                                                                                                                                                                                                                                                               |                 |                          |            |               |                |        |                 |                |               |                      |        |                    |                |               |                      |        |                   |                |                 |                          |        |                  |              |  |                 |        |                     |              |  |                 |        |                    |              |  |                     |
| 1.                                                            | 4 EACH              | <u>LED TRAFFIC SIGNAL HEAD</u> . THREE-SECTION VERTICAL, 12", EMPTY, POLYCARBONATE, TO BE MCCAIN MODEL NO. 31515, MOBOTREX MODEL NO. SG103A1C11GGG30 OR APPROVED EQUAL.                                                                                                                                                                                                                                                                                                                                                                                                                                                                                                                                                                                                                                                                                                                                                                                                                                                       |                 |                          |            |               |                |        |                 |                |               |                      |        |                    |                |               |                      |        |                   |                |                 |                          |        |                  |              |  |                 |        |                     |              |  |                 |        |                    |              |  |                     |
| 2.                                                            | 4 EACH              | <u>LED TRAFFIC SIGNAL HEAD</u> : FOUR-SECTION VERTICAL, 12", EMPTY, POLYCARBONATE, TO BE MCCAIN MODEL NO. M32700, MOBOTREX MODEL NO. SGXXXX OR APPROVED EQUAL.                                                                                                                                                                                                                                                                                                                                                                                                                                                                                                                                                                                                                                                                                                                                                                                                                                                                |                 |                          |            |               |                |        |                 |                |               |                      |        |                    |                |               |                      |        |                   |                |                 |                          |        |                  |              |  |                 |        |                     |              |  |                 |        |                    |              |  |                     |
| 3.                                                            |                     | <u>L.E.D. HEADS</u> . PROVIDE L.E.D. TRAFFIC SIGNAL MODULES WITH QUICK DISCONNECT LEADS, 12" IN DIAMETER, SMOOTH LENS SURFACE, 120 VAC, NON PIXILATED ("INCANDESCENT-LOOK"). RED AND YELLOW BALL LIGHTS ARE TO BE TINTED, AND GREEN BALL LIGHTS ARE TO BE CLEAR. RED AND YELLOW ARROW LIGHTS MAY BE TINTED OR CLEAR, AND GREEN ARROW LIGHTS ARE TO BE CLEAR. ALL L.E.D. MODULES MUST BE ITE CERTIFIED. TO BE THE FOLLOWING OR APPROVED EQUAL:                                                                                                                                                                                                                                                                                                                                                                                                                                                                                                                                                                                 |                 |                          |            |               |                |        |                 |                |               |                      |        |                    |                |               |                      |        |                   |                |                 |                          |        |                  |              |  |                 |        |                     |              |  |                 |        |                    |              |  |                     |
|                                                               |                     | <table border="0"> <tr> <td></td> <td style="text-align: center;"><u>DIALIGHT</u></td> <td style="text-align: center;"><u>EOI</u></td> <td style="text-align: center;"><u>LEOTEK</u></td> <td style="text-align: center;"><u>TRASTAR</u></td> </tr> <tr> <td>4 EACH</td> <td>L.E.D. RED BALL</td> <td>433-1210-003XL</td> <td>TRV-R12SG-D2T</td> <td>TSL-12R-LX-IL6-A1-P3</td> </tr> <tr> <td>4 EACH</td> <td>L.E.D. YELLOW BALL</td> <td>433-3230-901XL</td> <td>TRV-Y12SG-D1T</td> <td>TSL-12Y-LX-IL6-A1-P3</td> </tr> <tr> <td>4 EACH</td> <td>L.E.D. GREEN BALL</td> <td>433-2270-001XL</td> <td>TRV-G12SG-D2T-C</td> <td>TSL-12G-LX-IL6-A1-P3-CLR</td> </tr> <tr> <td>4 EACH</td> <td>L.E.D. RED ARROW</td> <td>432-1314-001</td> <td></td> <td>TSL-12RA-IL6-A1</td> </tr> <tr> <td>8 EACH</td> <td>L.E.D. YELLOW ARROW</td> <td>431-3334-001</td> <td></td> <td>TSL-12YA-IL6-A1</td> </tr> <tr> <td>4 EACH</td> <td>L.E.D. GREEN ARROW</td> <td>432-2374-001</td> <td></td> <td>TSL-12GA-IL6-A1-CLR</td> </tr> </table> |                 | <u>DIALIGHT</u>          | <u>EOI</u> | <u>LEOTEK</u> | <u>TRASTAR</u> | 4 EACH | L.E.D. RED BALL | 433-1210-003XL | TRV-R12SG-D2T | TSL-12R-LX-IL6-A1-P3 | 4 EACH | L.E.D. YELLOW BALL | 433-3230-901XL | TRV-Y12SG-D1T | TSL-12Y-LX-IL6-A1-P3 | 4 EACH | L.E.D. GREEN BALL | 433-2270-001XL | TRV-G12SG-D2T-C | TSL-12G-LX-IL6-A1-P3-CLR | 4 EACH | L.E.D. RED ARROW | 432-1314-001 |  | TSL-12RA-IL6-A1 | 8 EACH | L.E.D. YELLOW ARROW | 431-3334-001 |  | TSL-12YA-IL6-A1 | 4 EACH | L.E.D. GREEN ARROW | 432-2374-001 |  | TSL-12GA-IL6-A1-CLR |
|                                                               | <u>DIALIGHT</u>     | <u>EOI</u>                                                                                                                                                                                                                                                                                                                                                                                                                                                                                                                                                                                                                                                                                                                                                                                                                                                                                                                                                                                                                    | <u>LEOTEK</u>   | <u>TRASTAR</u>           |            |               |                |        |                 |                |               |                      |        |                    |                |               |                      |        |                   |                |                 |                          |        |                  |              |  |                 |        |                     |              |  |                 |        |                    |              |  |                     |
| 4 EACH                                                        | L.E.D. RED BALL     | 433-1210-003XL                                                                                                                                                                                                                                                                                                                                                                                                                                                                                                                                                                                                                                                                                                                                                                                                                                                                                                                                                                                                                | TRV-R12SG-D2T   | TSL-12R-LX-IL6-A1-P3     |            |               |                |        |                 |                |               |                      |        |                    |                |               |                      |        |                   |                |                 |                          |        |                  |              |  |                 |        |                     |              |  |                 |        |                    |              |  |                     |
| 4 EACH                                                        | L.E.D. YELLOW BALL  | 433-3230-901XL                                                                                                                                                                                                                                                                                                                                                                                                                                                                                                                                                                                                                                                                                                                                                                                                                                                                                                                                                                                                                | TRV-Y12SG-D1T   | TSL-12Y-LX-IL6-A1-P3     |            |               |                |        |                 |                |               |                      |        |                    |                |               |                      |        |                   |                |                 |                          |        |                  |              |  |                 |        |                     |              |  |                 |        |                    |              |  |                     |
| 4 EACH                                                        | L.E.D. GREEN BALL   | 433-2270-001XL                                                                                                                                                                                                                                                                                                                                                                                                                                                                                                                                                                                                                                                                                                                                                                                                                                                                                                                                                                                                                | TRV-G12SG-D2T-C | TSL-12G-LX-IL6-A1-P3-CLR |            |               |                |        |                 |                |               |                      |        |                    |                |               |                      |        |                   |                |                 |                          |        |                  |              |  |                 |        |                     |              |  |                 |        |                    |              |  |                     |
| 4 EACH                                                        | L.E.D. RED ARROW    | 432-1314-001                                                                                                                                                                                                                                                                                                                                                                                                                                                                                                                                                                                                                                                                                                                                                                                                                                                                                                                                                                                                                  |                 | TSL-12RA-IL6-A1          |            |               |                |        |                 |                |               |                      |        |                    |                |               |                      |        |                   |                |                 |                          |        |                  |              |  |                 |        |                     |              |  |                 |        |                    |              |  |                     |
| 8 EACH                                                        | L.E.D. YELLOW ARROW | 431-3334-001                                                                                                                                                                                                                                                                                                                                                                                                                                                                                                                                                                                                                                                                                                                                                                                                                                                                                                                                                                                                                  |                 | TSL-12YA-IL6-A1          |            |               |                |        |                 |                |               |                      |        |                    |                |               |                      |        |                   |                |                 |                          |        |                  |              |  |                 |        |                     |              |  |                 |        |                    |              |  |                     |
| 4 EACH                                                        | L.E.D. GREEN ARROW  | 432-2374-001                                                                                                                                                                                                                                                                                                                                                                                                                                                                                                                                                                                                                                                                                                                                                                                                                                                                                                                                                                                                                  |                 | TSL-12GA-IL6-A1-CLR      |            |               |                |        |                 |                |               |                      |        |                    |                |               |                      |        |                   |                |                 |                          |        |                  |              |  |                 |        |                     |              |  |                 |        |                    |              |  |                     |
| 4.                                                            | 10 EACH             | <u>TRAFFIC SIGNAL BACK PLATE</u> . 5" METAL, FLAT BACK FINISH ON THE FRONT AND SIGNAL GREEN ON THE BACK WITH 3" YELLOW RETROREFLECTIVE BORDER. BORDER TO BE FACTORY APPLIED, FOR THREE SECTION VERTICAL HEADS. TO BE ECONOLITE OR APPROVED EQUAL.                                                                                                                                                                                                                                                                                                                                                                                                                                                                                                                                                                                                                                                                                                                                                                             |                 |                          |            |               |                |        |                 |                |               |                      |        |                    |                |               |                      |        |                   |                |                 |                          |        |                  |              |  |                 |        |                     |              |  |                 |        |                    |              |  |                     |
| 5.                                                            | 28 EACH             | <u>TRAFFIC SIGNAL VISOR</u> . 12" METAL TUNNEL VISORS, TO BE ECONOLITE OR APPROVED EQUAL.                                                                                                                                                                                                                                                                                                                                                                                                                                                                                                                                                                                                                                                                                                                                                                                                                                                                                                                                     |                 |                          |            |               |                |        |                 |                |               |                      |        |                    |                |               |                      |        |                   |                |                 |                          |        |                  |              |  |                 |        |                     |              |  |                 |        |                    |              |  |                     |
| 6.                                                            | 4 EACH              | <u>TRAFFIC SIGNAL MOUNTING BRACKET</u> . FOR MAST ARM MOUNTING OF THREE SECTION HEADS PELCO MODEL NO. AS-0125-3-62, SKY BRACKET SS-SBC90-46 OR APPROVED EQUAL.                                                                                                                                                                                                                                                                                                                                                                                                                                                                                                                                                                                                                                                                                                                                                                                                                                                                |                 |                          |            |               |                |        |                 |                |               |                      |        |                    |                |               |                      |        |                   |                |                 |                          |        |                  |              |  |                 |        |                     |              |  |                 |        |                    |              |  |                     |
| 7.                                                            | 2 EACH              | <u>TRAFFIC SIGNAL MOUNTING BRACKET</u> . FOR MAST ARM MOUNTING OF FOUR SECTION HEADS PELCO MODEL NO. AS-XXXX-X-XX, SKY BRACKET SS-SBCXX-XX OR APPROVED EQUAL.                                                                                                                                                                                                                                                                                                                                                                                                                                                                                                                                                                                                                                                                                                                                                                                                                                                                 |                 |                          |            |               |                |        |                 |                |               |                      |        |                    |                |               |                      |        |                   |                |                 |                          |        |                  |              |  |                 |        |                     |              |  |                 |        |                    |              |  |                     |
| 8.                                                            | 2 EACH              | <u>TRAFFIC SIGNAL MOUNTING BRACKET</u> . FOR SIDE OF POST MOUNTING TERMINAL COMPARTMENT MOUNTING TO BE ECONOLITE FWA2114AG, WESTERN SYSTEM FRAMEWORKS OR APPROVED EQUAL.                                                                                                                                                                                                                                                                                                                                                                                                                                                                                                                                                                                                                                                                                                                                                                                                                                                      |                 |                          |            |               |                |        |                 |                |               |                      |        |                    |                |               |                      |        |                   |                |                 |                          |        |                  |              |  |                 |        |                     |              |  |                 |        |                    |              |  |                     |
| <b>ITEM 656-015A INTERSECTION PREEMPTION DETECTION SYSTEM</b> |                     |                                                                                                                                                                                                                                                                                                                                                                                                                                                                                                                                                                                                                                                                                                                                                                                                                                                                                                                                                                                                                               |                 |                          |            |               |                |        |                 |                |               |                      |        |                    |                |               |                      |        |                   |                |                 |                          |        |                  |              |  |                 |        |                     |              |  |                 |        |                    |              |  |                     |
| <b>EXISTING EQUIPMENT INSTALLED BY CONTRACTOR</b>             |                     |                                                                                                                                                                                                                                                                                                                                                                                                                                                                                                                                                                                                                                                                                                                                                                                                                                                                                                                                                                                                                               |                 |                          |            |               |                |        |                 |                |               |                      |        |                    |                |               |                      |        |                   |                |                 |                          |        |                  |              |  |                 |        |                     |              |  |                 |        |                    |              |  |                     |
| 1.                                                            | 1 LS                | <u>PREEMPT DETECTION SYSTEM</u> . TO INCLUDE RESET OF EXISTING PREEMPT DETECTION SYSTEM. NEW MOUNTING KIT, WIRING AND ALL OTHER NECESSARY HARDWARE, IF NEEDED, ARE CONSIDERED PART OF THE RESET AND ARE INCIDENTAL.                                                                                                                                                                                                                                                                                                                                                                                                                                                                                                                                                                                                                                                                                                                                                                                                           |                 |                          |            |               |                |        |                 |                |               |                      |        |                    |                |               |                      |        |                   |                |                 |                          |        |                  |              |  |                 |        |                     |              |  |                 |        |                    |              |  |                     |
| <b>ITEM 656-020B INTERSECTION DETECTION SYSTEM - RADAR</b>    |                     |                                                                                                                                                                                                                                                                                                                                                                                                                                                                                                                                                                                                                                                                                                                                                                                                                                                                                                                                                                                                                               |                 |                          |            |               |                |        |                 |                |               |                      |        |                    |                |               |                      |        |                   |                |                 |                          |        |                  |              |  |                 |        |                     |              |  |                 |        |                    |              |  |                     |
| <b>CONTRACTOR SUPPLIED MATERIALS</b>                          |                     |                                                                                                                                                                                                                                                                                                                                                                                                                                                                                                                                                                                                                                                                                                                                                                                                                                                                                                                                                                                                                               |                 |                          |            |               |                |        |                 |                |               |                      |        |                    |                |               |                      |        |                   |                |                 |                          |        |                  |              |  |                 |        |                     |              |  |                 |        |                    |              |  |                     |
| 1.                                                            | 1 EACH              | <u>RADAR DETECTION SYSTEM</u> . TO BE ECONOLITE EVO, OR APPROVED EQUAL. THE DETECTION SYSTEM SHALL INCLUDE 4 DETECTION UNITS AND APPROPRIATE MOUNTING BRACKETS AND COMPONENTS NECESSARY FOR SIGNAL OPERATIONS. MOUNTING BRACKETS, CABLE, CABLE PULLING, CABINET WIRING, WIRING HARNESSSES AND OTHER MISCELLANEOUS HARDWARE ARE CONSIDERED PART OF THE DETECTION SYSTEM.                                                                                                                                                                                                                                                                                                                                                                                                                                                                                                                                                                                                                                                       |                 |                          |            |               |                |        |                 |                |               |                      |        |                    |                |               |                      |        |                   |                |                 |                          |        |                  |              |  |                 |        |                     |              |  |                 |        |                    |              |  |                     |

| ITEM                                                         | QTY.    | DESCRIPTION                                                                                                                                                                                                                                                                                                                                                                                                                                                                                                                                                                                |
|--------------------------------------------------------------|---------|--------------------------------------------------------------------------------------------------------------------------------------------------------------------------------------------------------------------------------------------------------------------------------------------------------------------------------------------------------------------------------------------------------------------------------------------------------------------------------------------------------------------------------------------------------------------------------------------|
| <b>ITEM 656-020C INTERSECTION DETECTION SYSTEM - VIDEO</b>   |         |                                                                                                                                                                                                                                                                                                                                                                                                                                                                                                                                                                                            |
| <b>CONTRACTOR SUPPLIED MATERIALS</b>                         |         |                                                                                                                                                                                                                                                                                                                                                                                                                                                                                                                                                                                            |
| 1.                                                           | 1 EACH  | <u>EISHEYE VIDEO DETECTOR</u> . TO BE GRIDSMART FISHEYE CAMERA, OR APPROVED EQUAL. INCLUDES BELL CAMERA, JUNCTION BOX, CUSTOM MODULAR POLE ASSEMBLY WITH EXTENSION ARM AND 3-FOOT ELBOW, REPEATERS AND SMARTMOUNT BRACKET.                                                                                                                                                                                                                                                                                                                                                                 |
| 2.                                                           | VARIOUS | <u>MISCELLANEOUS ITEMS</u> . TO INCLUDE MOUNTAIN KIT, ELECTRONIC PROTECTION MODULE (EPM), CAT 5e CABLING AND ALL NECESSARY HARDWARE AND SOFTWARE FOR A COMPLETE INSTALLATION TO SERVICE INTERSECTION APPROACHES AND SHOWN ON THE PLANS.                                                                                                                                                                                                                                                                                                                                                    |
| <b>ITEM 656-020E INTERSECTION DETECTION SYSTEM - THERMAL</b> |         |                                                                                                                                                                                                                                                                                                                                                                                                                                                                                                                                                                                            |
| <b>CONTRACTOR SUPPLIED MATERIALS</b>                         |         |                                                                                                                                                                                                                                                                                                                                                                                                                                                                                                                                                                                            |
| 1.                                                           | 1 EACH  | <u>THERMAL DETECTION SYSTEM</u> . TO BE FLIR TRAFIONE, OR APPROVED EQUAL. THE DETECTION SYSTEM SHALL INCLUDE 4 DETECTION UNITS AND APPROPRIATE MOUNTING BRACKETS AND COMPONENTS NECESSARY FOR PEDESTRIAN DETECTION AND SIGNAL OPERATIONS. MOUNTING BRACKETS, CABLE, CABLE PULLING, CABINET WIRING, WIRING HARNESSSES AND OTHER MISCELLANEOUS HARDWARE ARE CONSIDERED PART OF THE DETECTION SYSTEM.                                                                                                                                                                                         |
| <b>ITEM 656-030A INTERSECTION SIGNAL STRUCTURE</b>           |         |                                                                                                                                                                                                                                                                                                                                                                                                                                                                                                                                                                                            |
| <b>ITEM FURNISHED BY CITY INSTALLED BY CONTRACTOR</b>        |         |                                                                                                                                                                                                                                                                                                                                                                                                                                                                                                                                                                                            |
| 1.                                                           | 2 EACH  | <u>TRAFFIC SIGNAL MAST ARM</u> . 35-FOOT SIGNAL MAST ARM WITH A 2" SLIPFITTER, TO BE IDAHO STANDARD MAST ARM TRAFFIC SIGNAL POLE IDENTIFICATION NO. ID-2-45-L-4015. MANUFACTURER TO BE VALMONT INDUSTRIES, KW INDUSTRIES, OR APPROVED EQUAL.                                                                                                                                                                                                                                                                                                                                               |
| <b>ITEM 656-035A INTERSECTION PEDESTRIAN SYSTEM</b>          |         |                                                                                                                                                                                                                                                                                                                                                                                                                                                                                                                                                                                            |
| <b>CONTRACTOR SUPPLIED MATERIALS</b>                         |         |                                                                                                                                                                                                                                                                                                                                                                                                                                                                                                                                                                                            |
| 1.                                                           | 8 EACH  | <u>PEDESTRIAN SIGNAL HEAD</u> . HOUSING TO BE 18"x18" TRAFFIC OLIVE GREEN WITH POWDER-COATED ALUMINUM EXTERIOR. SIGNAL HEAD TO BE 16" LED COUNTDOWN HAND/MAN (DIALIGHT, LEOTEK OR APPROVED EQUAL).                                                                                                                                                                                                                                                                                                                                                                                         |
| 2.                                                           | 4 EACH  | <u>PEDESTRIAN SIGNAL BRACKET</u> . DOUBLE, FOR SIDE OF POLE MOUNTING OF ONE-WAY 16" PEDESTRIAN SIGNAL HEAD. TO BE MCCAIN, PELCO OR APPROVED EQUAL.                                                                                                                                                                                                                                                                                                                                                                                                                                         |
| 3.                                                           | 8 EACH  | <u>APS PEDESTRIAN PUSH BUTTON</u> . TO INCLUDE 9"x15" MOUNTING ASSEMBLY, PUSH BUTTON, AND 9"x15" SIGN DECAL. TO BE POLARA, CAMPBELL OR APPROVED EQUAL.                                                                                                                                                                                                                                                                                                                                                                                                                                     |
| <b>ITEM 656-040A SIGNAL CABINET</b>                          |         |                                                                                                                                                                                                                                                                                                                                                                                                                                                                                                                                                                                            |
| <b>ITEM FURNISHED BY CITY INSTALLED BY CONTRACTOR</b>        |         |                                                                                                                                                                                                                                                                                                                                                                                                                                                                                                                                                                                            |
| 1.                                                           | 1 EACH  | <u>SIGNAL CABINET</u> . ECONOLITE CONTROLLER CABINET STRETCHED-P WITH ZINC BLUE BATTERY BACKUP SYSTEM AND GENERATOR PORT OR WESTERN SYSTEMS P-PLUS STRETCH WITH ALPHA BATTERY BACKUP AND GENERATOR PORT. SUPPLY A SIGNAL CABINET DOOR SENSOR AND HAVE IT WIRED TO THE SIGNAL CONTROLLER. FRONT AND BACK DOOR TO BE LEFT-HAND OUTSWING AND CABINET ORIENTED WITH FRONT DOOR FACING OPPOSITE OF TRAFFIC. ANY SIDE DOOR IS TO HAVE ADEQUATE CLEARANCE TO OPEN WITH RIGHT-HAND OUTSWING. INCLUDE ALL RELATED EQUIPMENT, RELAYS, LOAD SWITCHES AND ANCHOR BOLTS NEEDED FOR PROPER INSTALLATION. |

| REVISIONS |          |    |             |
|-----------|----------|----|-------------|
| NO        | DATE     | BY | DESCRIPTION |
| 1         | 3/8/2024 | AG | ADDENDUM 1  |
|           |          |    |             |
|           |          |    |             |

|                 |           |                |                           |
|-----------------|-----------|----------------|---------------------------|
| DESIGNED        | M. HEUGH  | SCALES SHOWN   | ARE FOR 11" X 17"         |
| DESIGN CHECKED  | A. GROVER | PRINTS ONLY    |                           |
| DETAILED        | M. HEUGH  | CADD FILE NAME | 22210_SGL_Mat_011.dgn.DGN |
| DRAWING CHECKED | A. GROVER | DRAWING DATE:  | March 08, 2024            |



**IDAHO TRANSPORTATION DEPARTMENT**  
 YOUR Safety - YOUR Mobility - YOUR Economic Opportunity

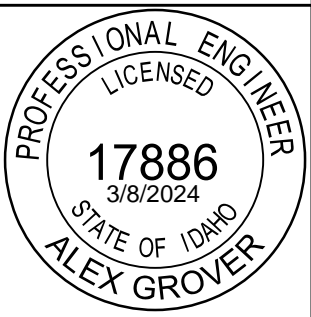


**Jacobs**

|             |           |
|-------------|-----------|
| PROJECT NO. | A022(210) |
|-------------|-----------|

|                               |                                             |
|-------------------------------|---------------------------------------------|
| TRAFFIC SIGNAL MATERIALS LIST | SH-75 - MAIN ST<br>KETCHUM<br>SUN VALLEY RD |
|-------------------------------|---------------------------------------------|

|            |            |
|------------|------------|
| ENGLISH    |            |
| COUNTY     | BLAINE     |
| KEY NUMBER | 22210      |
| SHEET      | 133 OF 176 |



1

| ITEM | QTY.   | DESCRIPTION                                                                                                                                                                                                                                                                                                                                                                                                                                                | ITEM | QTY. | DESCRIPTION |
|------|--------|------------------------------------------------------------------------------------------------------------------------------------------------------------------------------------------------------------------------------------------------------------------------------------------------------------------------------------------------------------------------------------------------------------------------------------------------------------|------|------|-------------|
| 1.   | 2 EACH | ITEM 203-006A REMOVAL OF SIGN PERFORMED BY CONTRACTOR                                                                                                                                                                                                                                                                                                                                                                                                      |      |      |             |
|      |        | REMOVAL OF SIGN. CONTRACTOR TO REMOVE EXISTING SIGN ON TRAFFIC SIGNAL MAST ARM. SIGN TO BE RETURNED TO CITY OF KETCHUM.                                                                                                                                                                                                                                                                                                                                    |      |      |             |
| 1.   | 6 EACH | ITEM 203-122B REMOVAL OF MISCELLANEOUS ITEM (SIGNAL HEAD) PERFORMED BY CONTRACTOR                                                                                                                                                                                                                                                                                                                                                                          |      |      |             |
|      |        | REMOVAL OF SIGNAL HEAD. CONTRACTOR TO REMOVE EXISTING SIGNAL HEAD ON TRAFFIC SIGNAL MAST ARM AND EXISTING PEDESTRIAN SIGNAL HEAD ON TRAFFIC SIGNAL POLE. SIGNAL HEADS TO BE RETURNED TO CITY OF KETCHUM.                                                                                                                                                                                                                                                   |      |      |             |
| 1.   | 1 EACH | ITEM 657-015A RRFB, AC POWERED ITEMS FURNISHED BY CITY AND INSTALLED BY CONTRACTOR                                                                                                                                                                                                                                                                                                                                                                         |      |      |             |
|      |        | RECTANGULAR RAPID FLASHING BEACONS. CITY OF KETCHUM TO SUPPLY FULLY FUNCTIONAL RRFB ASSEMBLY. CONTRACTOR TO INSTALL RRFB UNITS AND CONTROLLER AND CONNECT TO AC POWER. OTHER VARIOUS ITEMS, SUCH AS HARDWARE AND FITTINGS NECESSARY FOR A COMPLETE SYSTEM ARE CONSIDERED PART OF THE RRFB SYSTEM. REMOVE EXISTING PEDESTRIAN PUSH BUTTONS AND EXTENSIONS FROM EXISTING LUMINAIRE POLES AND REINSTALL ON THE NEW LUMINAIRE POLES AS INDICATED ON THE PLANS. |      |      |             |

| REVISIONS |          |    |             |
|-----------|----------|----|-------------|
| NO        | DATE     | BY | DESCRIPTION |
| 1         | 3/8/2024 | AG | ADDENDUM 1  |
|           |          |    |             |
|           |          |    |             |

|                              |                                                  |
|------------------------------|--------------------------------------------------|
| DESIGNED<br>M. HEUGH         | SCALES SHOWN<br>ARE FOR 11" X 17"<br>PRINTS ONLY |
| DESIGN CHECKED<br>A. GROVER  |                                                  |
| DETAILED<br>M. HEUGH         | CADD FILE NAME<br>22210_SGL_Mat_021.dgn.DGN      |
| DRAWING CHECKED<br>A. GROVER | DRAWING DATE:<br>March 08, 2024                  |

**IDAHO**  
**TRANSPORTATION**  
**DEPARTMENT**

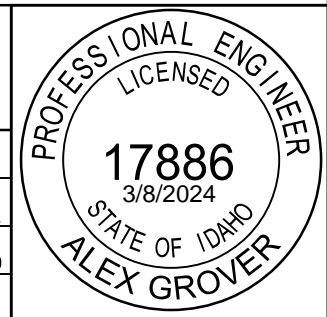
YOUR Safety → YOUR Mobility →  
YOUR Economic Opportunity

Jacobs

|             |           |
|-------------|-----------|
| PROJECT NO. | A022(210) |
|-------------|-----------|

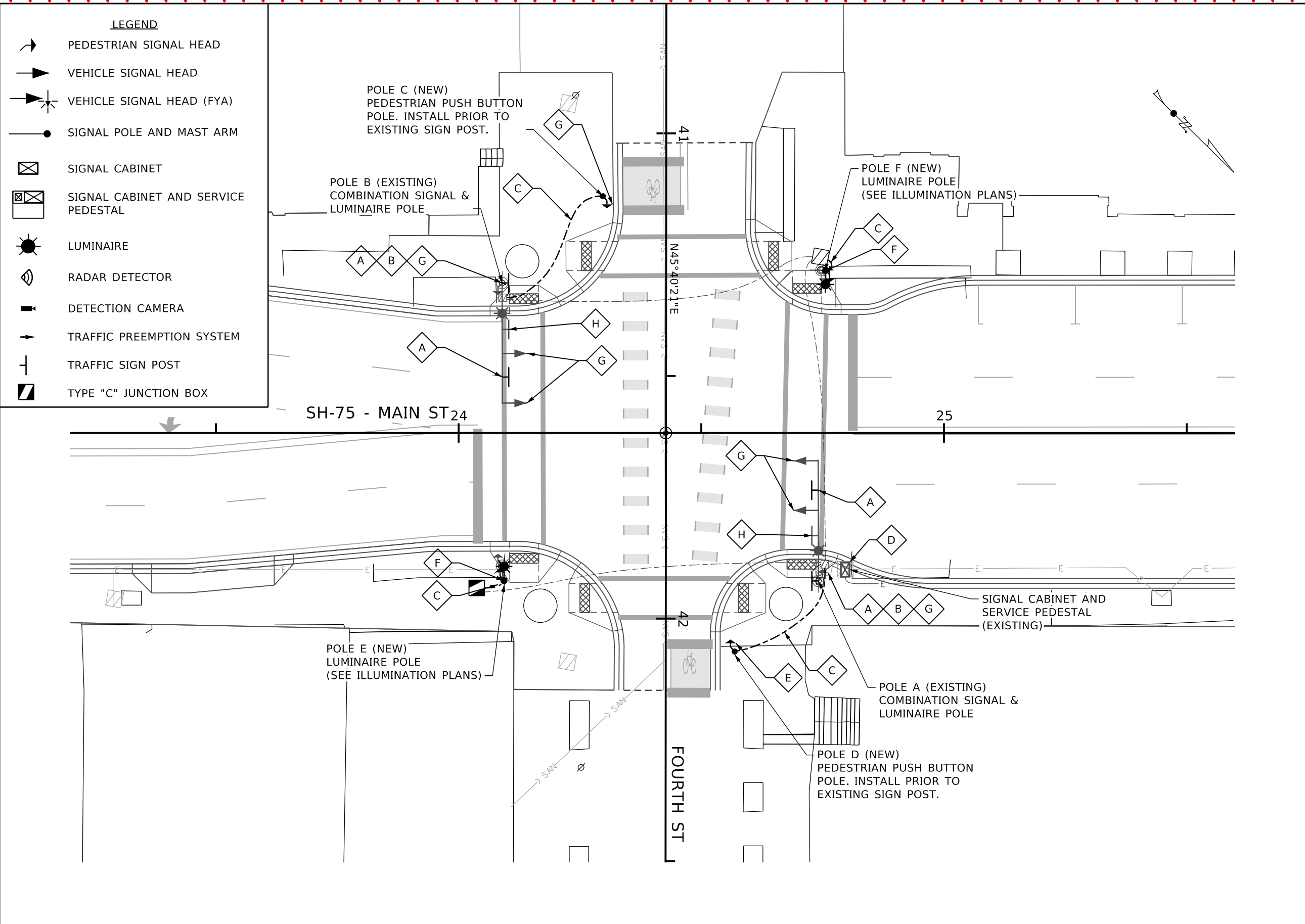
|                               |                                         |
|-------------------------------|-----------------------------------------|
| TRAFFIC SIGNAL MATERIALS LIST | SH-75 - MAIN ST<br>KETCHUM<br>FOURTH ST |
|-------------------------------|-----------------------------------------|

|                |        |
|----------------|--------|
| <b>ENGLISH</b> |        |
| COUNTY         | BLAINE |
| KEY NUMBER     | 22210  |
| SHEET          | OF 176 |





1



**GENERAL NOTES**

1. THE CONTRACTOR SHALL VERIFY AND CHECK ALL DIMENSIONS AND DETAILS SHOWN ON THE DRAWINGS PRIOR TO THE START OF CONSTRUCTION. ANY DISCREPANCIES SHALL BE IMMEDIATELY BROUGHT TO THE ATTENTION OF THE ENGINEER FOR CLARIFICATION.
2. LOCATIONS OF EXISTING UNDERGROUND STRUCTURES AND UTILITIES SUCH AS PIPELINES, CONDUITS, CABLES, ETC. SHOWN ON THE TRAFFIC SIGNAL PLANS ARE APPROXIMATE ONLY. IT IS NOT THE INTENT OF THESE PLANS TO SHOW THE EXACT LOCATION OF ALL UNDERGROUND UTILITIES AND STRUCTURES. IT IS THE RESPONSIBILITY OF THE CONTRACTOR TO VERIFY THE LOCATIONS OF ALL EXISTING UTILITIES WITH THE RESPECTIVE OWNERS. CONTRACTOR SHALL CONTACT ITD SIGNAL FOREMAN AND ALLOW 3 BUSINESS DAYS TO OBTAIN LOCATES OF ITD FACILITIES. EXISTING UTILITIES DAMAGED BY THE CONTRACTOR SHALL BE REPAIRED AT THE CONTRACTORS EXPENSE.
3. THE LOCATIONS OF THE TRAFFIC SIGNAL CABINET, SERVICE PEDESTAL, SIGNAL POLES, LUMINAIRE POLES, AND PEDESTRIAN SIGNAL POLES SHALL BE FIELD VERIFIED AND APPROVED BY THE ENGINEER PRIOR TO INSTALLATION.
4. INFORMATION SHOWN IN THE SHEET IS ACCURATE FOR TRAFFIC SIGNAL IMPROVEMENTS ONLY.

- CONSTRUCTION NOTES**
- ⬡ INSTALL NEW RAPID RECTANGULAR FLASHING BEACON (RRFB)
  - ⬢ INSTALL NEW SIGN
  - ⬣ INSTALL NEW CONDUIT AND CONDUCTORS
  - ⬤ INSTALL RRFB CONTROLLER IN EXISTING CABINET
  - ⬥ INSTALL NEW AUDIBLE PEDESTRIAN PUSH BUTTON
  - ⬦ RESET PEDESTRIAN PUSH BUTTON FROM EXISTING LUMINAIRE POLE TO NEW LUMINAIRE POLE
  - ⬧ REMOVE EXISTING SIGNAL HEAD
  - ⬨ REMOVE EXISTING SIGN

| REVISIONS |          |    |             |
|-----------|----------|----|-------------|
| NO        | DATE     | BY | DESCRIPTION |
| 1         | 3/8/2024 | AG | ADDENDUM 1  |
|           |          |    |             |
|           |          |    |             |

|                 |           |                                                                                                                |
|-----------------|-----------|----------------------------------------------------------------------------------------------------------------|
| DESIGNED        | M. HEUGH  | SCALES SHOWN ARE FOR 11" X 17" PRINTS ONLY<br>CADD FILE NAME 22210_SGL_021.dgn<br>DRAWING DATE: March 08, 2024 |
| DESIGN CHECKED  | A. GROVER |                                                                                                                |
| DETAILED        | M. HEUGH  |                                                                                                                |
| DRAWING CHECKED | A. GROVER |                                                                                                                |

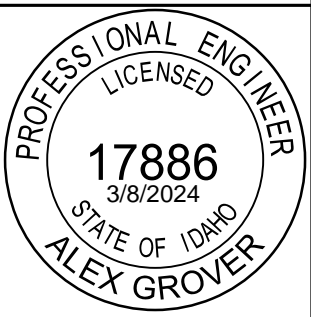
**IDAHO TRANSPORTATION DEPARTMENT**  
 YOUR Safety - YOUR Mobility - YOUR Economic Opportunity

Jacobs

PROJECT NO.  
A022(210)

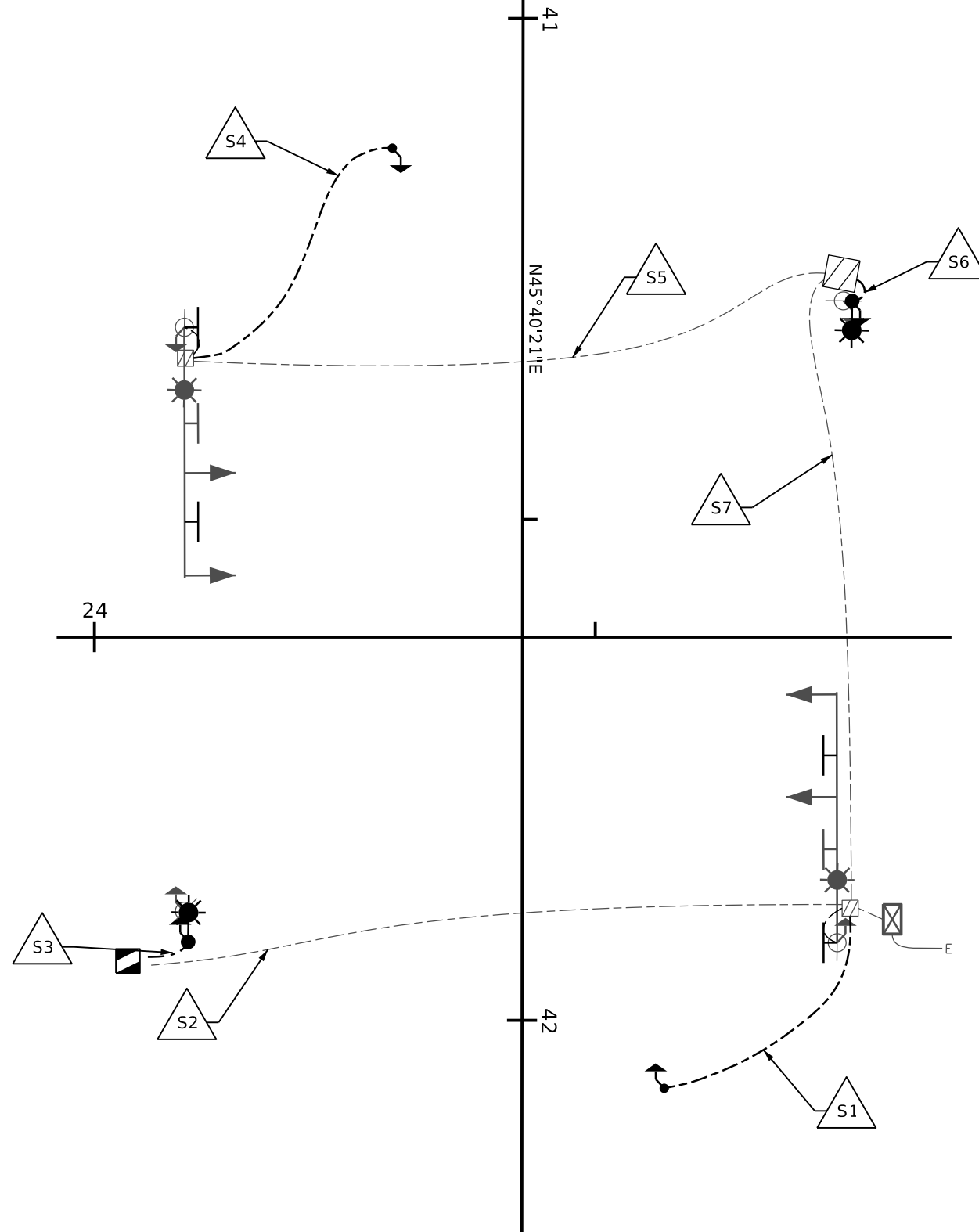
SIGNAL PLANS  
SH-75 - MAIN ST  
KETCHUM  
FOURTH ST

**ENGLISH**  
COUNTY BLAINE  
KEY NUMBER 22210  
SHEET OF 176



CONDUIT AND CONDUCTOR SCHEDULE

| NO. | CONDUIT    | CONDUCTORS        |
|-----|------------|-------------------|
| S1  | NEW 2" RPC | 1 2C<br>1 #6 BARE |
| S2  | 2" RPC     | 1 2C<br>1 #6 BARE |
| S3  | NEW 2" RPC | 1 2C<br>1 #6 BARE |
| S4  | NEW 2" RPC | 1 2C<br>1 #6 BARE |
| S5  | 2" RPC     | 1 2C<br>1 #6 BARE |
| S6  | NEW 2" RPC | 1 2C<br>1 #6 BARE |
| S7  | 2" RPC     | 1 2C<br>1 #6 BARE |



LEGEND:

SIGNAL CONDUIT GROUP

| REVISIONS |          |    |             |
|-----------|----------|----|-------------|
| NO.       | DATE     | BY | DESCRIPTION |
| 1         | 3/8/2024 | AG | ADDENDUM 1  |
|           |          |    |             |
|           |          |    |             |

|                 |           |                                            |
|-----------------|-----------|--------------------------------------------|
| DESIGNED        | M. HEUGH  | SCALES SHOWN ARE FOR 11" X 17" PRINTS ONLY |
| DESIGN CHECKED  | A. GROVER | CADD FILE NAME                             |
| DETAILED        | M. HEUGH  | 22210_SGL_022.dgn                          |
| DRAWING CHECKED | A. GROVER | DRAWING DATE:                              |
|                 |           | March 08, 2024                             |

**IDAHO TRANSPORTATION DEPARTMENT**  
 YOUR Safety - YOUR Mobility - YOUR Economic Opportunity

**Jacobs**

|             |           |
|-------------|-----------|
| PROJECT NO. | A022(210) |
|-------------|-----------|

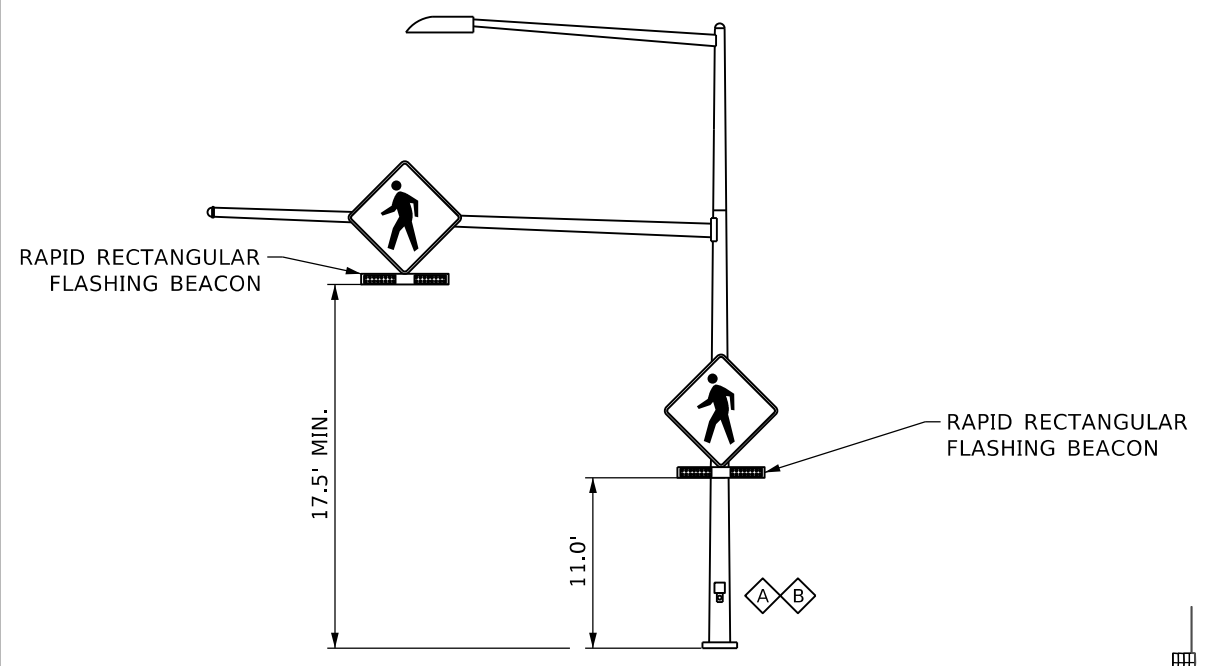
|              |                                         |
|--------------|-----------------------------------------|
| SIGNAL PLANS | SH-75 - MAIN ST<br>KETCHUM<br>FOURTH ST |
|--------------|-----------------------------------------|

|                |        |
|----------------|--------|
| <b>ENGLISH</b> |        |
| COUNTY         | BLAINE |
| KEY NUMBER     | 22210  |
| SHEET          | OF 176 |

**PROFESSIONAL ENGINEER**  
 LICENSED  
**17886**  
 3/8/2024  
 STATE OF IDAHO  
**ALEX GROVER**

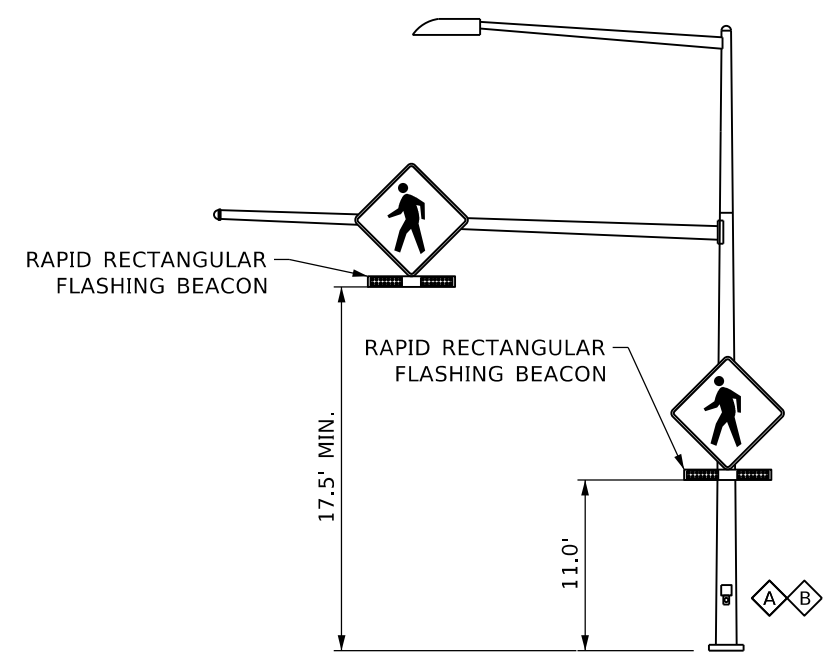
1

NORTHBOUND APPROACH



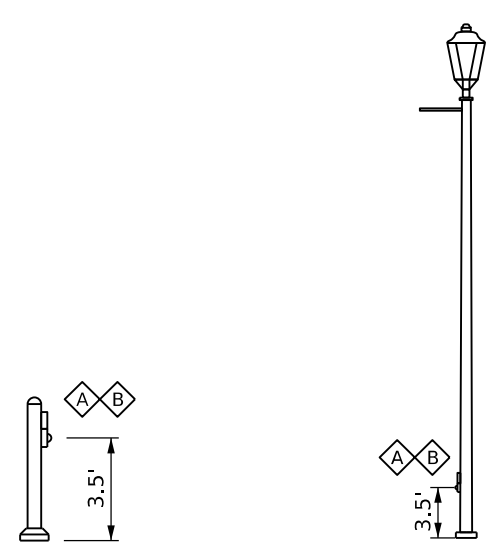
POLE A DETAIL  
NOT TO SCALE

SOUTHBOUND APPROACH

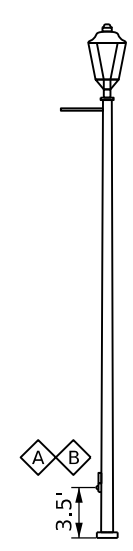


POLE B DETAIL  
NOT TO SCALE

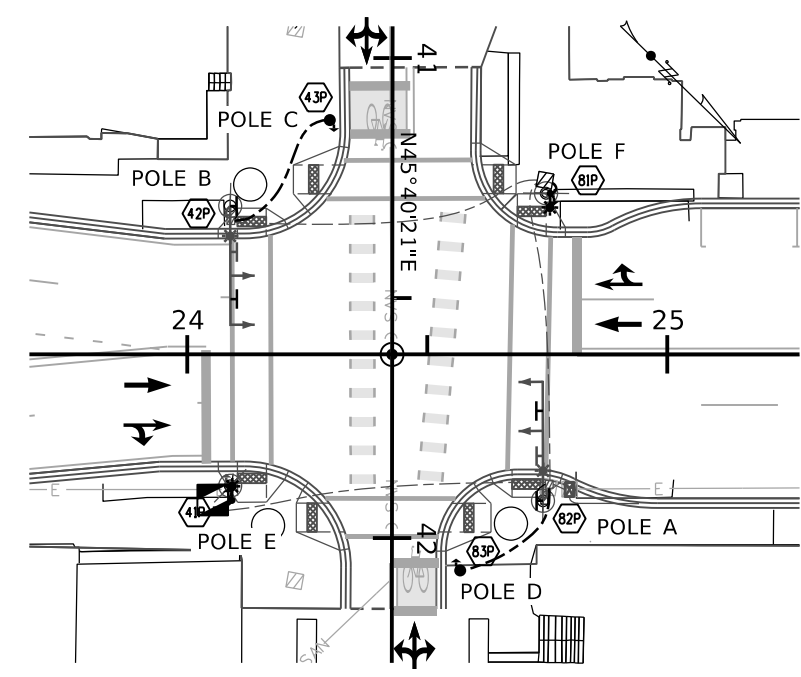
EASTBOUND APPROACH



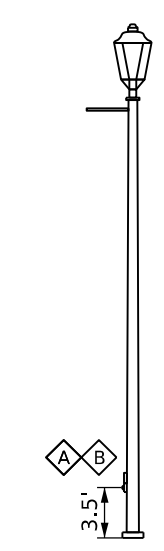
POLE C DETAIL  
NOT TO SCALE



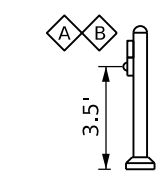
POLE F DETAIL  
NOT TO SCALE



WESTBOUND APPROACH



POLE E DETAIL  
NOT TO SCALE



POLE D DETAIL  
NOT TO SCALE

- ◆ A INSTALL AUDIBLE PEDESTRIAN SIGNAL HOUSING.
- ◆ B INSTALL R10-25 SIGN PER MUTCD STANDARDS.
- 1. DIMENSIONS NOT SHOWN IN DETAILS ARE TO REMAIN AS EXISTING.
- 2. EXISTING EQUIPMENT NOT SHOWN IN DETAILS IS TO REMAIN AND IN EXISTING LOCATION UNLESS OTHERWISE NOTED.

| REVISIONS |          |    |             |
|-----------|----------|----|-------------|
| NO        | DATE     | BY | DESCRIPTION |
| 1         | 3/8/2024 | AG | ADDENDUM 1  |
|           |          |    |             |
|           |          |    |             |

|                 |           |
|-----------------|-----------|
| DESIGNED        | M. HEUGH  |
| DESIGN CHECKED  | A. GROVER |
| DETAILED        | M. HEUGH  |
| DRAWING CHECKED | A. GROVER |

|                                            |
|--------------------------------------------|
| SCALES SHOWN ARE FOR 11" X 17" PRINTS ONLY |
| CADD FILE NAME<br>22210_SGL_023.dgn        |
| DRAWING DATE:<br>March 08, 2024            |

**IDAHO TRANSPORTATION DEPARTMENT**  
 YOUR Safety - YOUR Mobility - YOUR Economic Opportunity

Jacobs

|             |           |
|-------------|-----------|
| PROJECT NO. | A022(210) |
|-------------|-----------|

|              |                                         |
|--------------|-----------------------------------------|
| SIGNAL PLANS | SH-75 - MAIN ST<br>KETCHUM<br>FOURTH ST |
|--------------|-----------------------------------------|

|                |        |
|----------------|--------|
| <b>ENGLISH</b> |        |
| COUNTY         | BLAINE |
| KEY NUMBER     | 22210  |
| SHEET          | OF 176 |

PROFESSIONAL ENGINEER  
 LICENSED  
**17886**  
 3/8/2024  
 STATE OF IDAHO  
 ALEX GROVER

| ITEM                                                          | QTY.                | DESCRIPTION                                                                                                                                                                                                                                                                                                                                                                                                                                                                                                                                                                                                                                                                                                                                                                                                                                                                                                                                                                                                                   |                 |                          |            |               |                |        |                 |                |               |                      |        |                    |                |               |                      |        |                   |                |                 |                          |        |                  |              |  |                 |        |                     |              |  |                 |        |                    |              |  |                     |
|---------------------------------------------------------------|---------------------|-------------------------------------------------------------------------------------------------------------------------------------------------------------------------------------------------------------------------------------------------------------------------------------------------------------------------------------------------------------------------------------------------------------------------------------------------------------------------------------------------------------------------------------------------------------------------------------------------------------------------------------------------------------------------------------------------------------------------------------------------------------------------------------------------------------------------------------------------------------------------------------------------------------------------------------------------------------------------------------------------------------------------------|-----------------|--------------------------|------------|---------------|----------------|--------|-----------------|----------------|---------------|----------------------|--------|--------------------|----------------|---------------|----------------------|--------|-------------------|----------------|-----------------|--------------------------|--------|------------------|--------------|--|-----------------|--------|---------------------|--------------|--|-----------------|--------|--------------------|--------------|--|---------------------|
| <b>ITEM 656-010A SIGNAL HOUSING</b>                           |                     |                                                                                                                                                                                                                                                                                                                                                                                                                                                                                                                                                                                                                                                                                                                                                                                                                                                                                                                                                                                                                               |                 |                          |            |               |                |        |                 |                |               |                      |        |                    |                |               |                      |        |                   |                |                 |                          |        |                  |              |  |                 |        |                     |              |  |                 |        |                    |              |  |                     |
| <b>CONTRACTOR SUPPLIED MATERIALS</b>                          |                     |                                                                                                                                                                                                                                                                                                                                                                                                                                                                                                                                                                                                                                                                                                                                                                                                                                                                                                                                                                                                                               |                 |                          |            |               |                |        |                 |                |               |                      |        |                    |                |               |                      |        |                   |                |                 |                          |        |                  |              |  |                 |        |                     |              |  |                 |        |                    |              |  |                     |
| 1.                                                            | 1 EACH              | <u>LED TRAFFIC SIGNAL HEAD</u> , THREE-SECTION VERTICAL, 12", EMPTY, POLYCARBONATE, TO BE MCCAIN MODEL NO. 31515, MOBOTREX MODEL NO. SG103A1C11GGG30 OR APPROVED EQUAL.                                                                                                                                                                                                                                                                                                                                                                                                                                                                                                                                                                                                                                                                                                                                                                                                                                                       |                 |                          |            |               |                |        |                 |                |               |                      |        |                    |                |               |                      |        |                   |                |                 |                          |        |                  |              |  |                 |        |                     |              |  |                 |        |                    |              |  |                     |
| 2.                                                            | 4 EACH              | <u>L.E.D. TRAFFIC SIGNAL HEAD</u> : FOUR-SECTION VERTICAL, 12", EMPTY, POLYCARBONATE, TO BE MCCAIN MODEL NO. M32700, MOBOTREX MODEL NO. SGXXXX OR APPROVED EQUAL.                                                                                                                                                                                                                                                                                                                                                                                                                                                                                                                                                                                                                                                                                                                                                                                                                                                             |                 |                          |            |               |                |        |                 |                |               |                      |        |                    |                |               |                      |        |                   |                |                 |                          |        |                  |              |  |                 |        |                     |              |  |                 |        |                    |              |  |                     |
| 3.                                                            |                     | <u>L.E.D. HEADS</u> . PROVIDE L.E.D. TRAFFIC SIGNAL MODULES WITH QUICK DISCONNECT LEADS, 12" IN DIAMETER, SMOOTH LENS SURFACE, 120 VAC, NON PIXILATED ("INCANDESCENT-LOOK"). RED AND YELLOW BALL LIGHTS ARE TO BE TINTED, AND GREEN BALL LIGHTS ARE TO BE CLEAR. RED AND YELLOW ARROW LIGHTS MAY BE TINTED OR CLEAR, AND GREEN ARROW LIGHTS ARE TO BE CLEAR. ALL L.E.D. MODULES MUST BE ITE CERTIFIED. TO BE THE FOLLOWING OR APPROVED EQUAL:                                                                                                                                                                                                                                                                                                                                                                                                                                                                                                                                                                                 |                 |                          |            |               |                |        |                 |                |               |                      |        |                    |                |               |                      |        |                   |                |                 |                          |        |                  |              |  |                 |        |                     |              |  |                 |        |                    |              |  |                     |
|                                                               |                     | <table border="0"> <tr> <td></td> <td style="text-align: center;"><u>DIALIGHT</u></td> <td style="text-align: center;"><u>EOI</u></td> <td style="text-align: center;"><u>LEOTEK</u></td> <td style="text-align: center;"><u>TRASTAR</u></td> </tr> <tr> <td>1 EACH</td> <td>L.E.D. RED BALL</td> <td>433-1210-003XL</td> <td>TRV-R12SG-D2T</td> <td>TSL-12R-LX-IL6-A1-P3</td> </tr> <tr> <td>1 EACH</td> <td>L.E.D. YELLOW BALL</td> <td>433-3230-901XL</td> <td>TRV-Y12SG-D1T</td> <td>TSL-12Y-LX-IL6-A1-P3</td> </tr> <tr> <td>1 EACH</td> <td>L.E.D. GREEN BALL</td> <td>433-2270-001XL</td> <td>TRV-G12SG-D2T-C</td> <td>TSL-12G-LX-IL6-A1-P3-CLR</td> </tr> <tr> <td>4 EACH</td> <td>L.E.D. RED ARROW</td> <td>432-1314-001</td> <td></td> <td>TSL-12RA-IL6-A1</td> </tr> <tr> <td>8 EACH</td> <td>L.E.D. YELLOW ARROW</td> <td>431-3334-001</td> <td></td> <td>TSL-12YA-IL6-A1</td> </tr> <tr> <td>4 EACH</td> <td>L.E.D. GREEN ARROW</td> <td>432-2374-001</td> <td></td> <td>TSL-12GA-IL6-A1-CLR</td> </tr> </table> |                 | <u>DIALIGHT</u>          | <u>EOI</u> | <u>LEOTEK</u> | <u>TRASTAR</u> | 1 EACH | L.E.D. RED BALL | 433-1210-003XL | TRV-R12SG-D2T | TSL-12R-LX-IL6-A1-P3 | 1 EACH | L.E.D. YELLOW BALL | 433-3230-901XL | TRV-Y12SG-D1T | TSL-12Y-LX-IL6-A1-P3 | 1 EACH | L.E.D. GREEN BALL | 433-2270-001XL | TRV-G12SG-D2T-C | TSL-12G-LX-IL6-A1-P3-CLR | 4 EACH | L.E.D. RED ARROW | 432-1314-001 |  | TSL-12RA-IL6-A1 | 8 EACH | L.E.D. YELLOW ARROW | 431-3334-001 |  | TSL-12YA-IL6-A1 | 4 EACH | L.E.D. GREEN ARROW | 432-2374-001 |  | TSL-12GA-IL6-A1-CLR |
|                                                               | <u>DIALIGHT</u>     | <u>EOI</u>                                                                                                                                                                                                                                                                                                                                                                                                                                                                                                                                                                                                                                                                                                                                                                                                                                                                                                                                                                                                                    | <u>LEOTEK</u>   | <u>TRASTAR</u>           |            |               |                |        |                 |                |               |                      |        |                    |                |               |                      |        |                   |                |                 |                          |        |                  |              |  |                 |        |                     |              |  |                 |        |                    |              |  |                     |
| 1 EACH                                                        | L.E.D. RED BALL     | 433-1210-003XL                                                                                                                                                                                                                                                                                                                                                                                                                                                                                                                                                                                                                                                                                                                                                                                                                                                                                                                                                                                                                | TRV-R12SG-D2T   | TSL-12R-LX-IL6-A1-P3     |            |               |                |        |                 |                |               |                      |        |                    |                |               |                      |        |                   |                |                 |                          |        |                  |              |  |                 |        |                     |              |  |                 |        |                    |              |  |                     |
| 1 EACH                                                        | L.E.D. YELLOW BALL  | 433-3230-901XL                                                                                                                                                                                                                                                                                                                                                                                                                                                                                                                                                                                                                                                                                                                                                                                                                                                                                                                                                                                                                | TRV-Y12SG-D1T   | TSL-12Y-LX-IL6-A1-P3     |            |               |                |        |                 |                |               |                      |        |                    |                |               |                      |        |                   |                |                 |                          |        |                  |              |  |                 |        |                     |              |  |                 |        |                    |              |  |                     |
| 1 EACH                                                        | L.E.D. GREEN BALL   | 433-2270-001XL                                                                                                                                                                                                                                                                                                                                                                                                                                                                                                                                                                                                                                                                                                                                                                                                                                                                                                                                                                                                                | TRV-G12SG-D2T-C | TSL-12G-LX-IL6-A1-P3-CLR |            |               |                |        |                 |                |               |                      |        |                    |                |               |                      |        |                   |                |                 |                          |        |                  |              |  |                 |        |                     |              |  |                 |        |                    |              |  |                     |
| 4 EACH                                                        | L.E.D. RED ARROW    | 432-1314-001                                                                                                                                                                                                                                                                                                                                                                                                                                                                                                                                                                                                                                                                                                                                                                                                                                                                                                                                                                                                                  |                 | TSL-12RA-IL6-A1          |            |               |                |        |                 |                |               |                      |        |                    |                |               |                      |        |                   |                |                 |                          |        |                  |              |  |                 |        |                     |              |  |                 |        |                    |              |  |                     |
| 8 EACH                                                        | L.E.D. YELLOW ARROW | 431-3334-001                                                                                                                                                                                                                                                                                                                                                                                                                                                                                                                                                                                                                                                                                                                                                                                                                                                                                                                                                                                                                  |                 | TSL-12YA-IL6-A1          |            |               |                |        |                 |                |               |                      |        |                    |                |               |                      |        |                   |                |                 |                          |        |                  |              |  |                 |        |                     |              |  |                 |        |                    |              |  |                     |
| 4 EACH                                                        | L.E.D. GREEN ARROW  | 432-2374-001                                                                                                                                                                                                                                                                                                                                                                                                                                                                                                                                                                                                                                                                                                                                                                                                                                                                                                                                                                                                                  |                 | TSL-12GA-IL6-A1-CLR      |            |               |                |        |                 |                |               |                      |        |                    |                |               |                      |        |                   |                |                 |                          |        |                  |              |  |                 |        |                     |              |  |                 |        |                    |              |  |                     |
| 4.                                                            | 5 EACH              | <u>TRAFFIC SIGNAL BACK PLATE</u> , 5" METAL, FLAT BACK FINISH ON THE FRONT AND SIGNAL GREEN ON THE BACK WITH 3" YELLOW RETROREFLECTIVE BORDER. BORDER TO BE FACTORY APPLIED, FOR THREE SECTION VERTICAL HEADS. TO BE ECONOLITE OR APPROVED EQUAL.                                                                                                                                                                                                                                                                                                                                                                                                                                                                                                                                                                                                                                                                                                                                                                             |                 |                          |            |               |                |        |                 |                |               |                      |        |                    |                |               |                      |        |                   |                |                 |                          |        |                  |              |  |                 |        |                     |              |  |                 |        |                    |              |  |                     |
| 5.                                                            | 19 EACH             | <u>TRAFFIC SIGNAL VISOR</u> , 12" METAL TUNNEL VISORS, TO BE ECONOLITE OR APPROVED EQUAL.                                                                                                                                                                                                                                                                                                                                                                                                                                                                                                                                                                                                                                                                                                                                                                                                                                                                                                                                     |                 |                          |            |               |                |        |                 |                |               |                      |        |                    |                |               |                      |        |                   |                |                 |                          |        |                  |              |  |                 |        |                     |              |  |                 |        |                    |              |  |                     |
| 6.                                                            | 1 EACH              | <u>TRAFFIC SIGNAL MOUNTING BRACKET</u> , FOR MAST ARM MOUNTING OF FOUR SECTION HEADS PELCO MODEL NO. AS-XXXX-X-XX, SKY BRACKET SS-SBCXX-XX OR APPROVED EQUAL.                                                                                                                                                                                                                                                                                                                                                                                                                                                                                                                                                                                                                                                                                                                                                                                                                                                                 |                 |                          |            |               |                |        |                 |                |               |                      |        |                    |                |               |                      |        |                   |                |                 |                          |        |                  |              |  |                 |        |                     |              |  |                 |        |                    |              |  |                     |
| 7.                                                            | 2 EACH              | <u>TRAFFIC SIGNAL MOUNTING BRACKET</u> , FOR MAST ARM MOUNTING OF FOUR SECTION HEADS PELCO MODEL NO. AS-XXXX-X-XX, SKY BRACKET SS-SBCXX-XX OR APPROVED EQUAL.                                                                                                                                                                                                                                                                                                                                                                                                                                                                                                                                                                                                                                                                                                                                                                                                                                                                 |                 |                          |            |               |                |        |                 |                |               |                      |        |                    |                |               |                      |        |                   |                |                 |                          |        |                  |              |  |                 |        |                     |              |  |                 |        |                    |              |  |                     |
| 8.                                                            | 2 EACH              | <u>TRAFFIC SIGNAL MOUNTING BRACKET</u> , FOR SIDE OF POST MOUNTING TERMINAL COMPARTMENT MOUNTING TO BE ECONOLITE FWA2114AG, WESTERN SYSTEM FRAMEWORKS OR APPROVED EQUAL.                                                                                                                                                                                                                                                                                                                                                                                                                                                                                                                                                                                                                                                                                                                                                                                                                                                      |                 |                          |            |               |                |        |                 |                |               |                      |        |                    |                |               |                      |        |                   |                |                 |                          |        |                  |              |  |                 |        |                     |              |  |                 |        |                    |              |  |                     |
| <b>ITEM 656-015A INTERSECITON PREEMPTION DETECTION SYSTEM</b> |                     |                                                                                                                                                                                                                                                                                                                                                                                                                                                                                                                                                                                                                                                                                                                                                                                                                                                                                                                                                                                                                               |                 |                          |            |               |                |        |                 |                |               |                      |        |                    |                |               |                      |        |                   |                |                 |                          |        |                  |              |  |                 |        |                     |              |  |                 |        |                    |              |  |                     |
| <b>CONTRACTOR SUPPLIED MATERIALS</b>                          |                     |                                                                                                                                                                                                                                                                                                                                                                                                                                                                                                                                                                                                                                                                                                                                                                                                                                                                                                                                                                                                                               |                 |                          |            |               |                |        |                 |                |               |                      |        |                    |                |               |                      |        |                   |                |                 |                          |        |                  |              |  |                 |        |                     |              |  |                 |        |                    |              |  |                     |
| 1.                                                            | 1 LS                | <u>PREEMPT DETECTION SYSTEM</u> , TO INCLUDE RESET OF EXISTING PREEMPT DETECTION SYSTEM. NEW MOUNTING KIT, WIRING AND ALL OTHER NECESSARY HARDWARE, IF NEEDED, ARE CONSIDERED PART OF THE RESET AND ARE INCIDENTAL.                                                                                                                                                                                                                                                                                                                                                                                                                                                                                                                                                                                                                                                                                                                                                                                                           |                 |                          |            |               |                |        |                 |                |               |                      |        |                    |                |               |                      |        |                   |                |                 |                          |        |                  |              |  |                 |        |                     |              |  |                 |        |                    |              |  |                     |
| <b>ITEM 656-020B INTERSECTION DETECTION SYSTEM - RADAR</b>    |                     |                                                                                                                                                                                                                                                                                                                                                                                                                                                                                                                                                                                                                                                                                                                                                                                                                                                                                                                                                                                                                               |                 |                          |            |               |                |        |                 |                |               |                      |        |                    |                |               |                      |        |                   |                |                 |                          |        |                  |              |  |                 |        |                     |              |  |                 |        |                    |              |  |                     |
| <b>CONTRACTOR SUPPLIED MATERIALS</b>                          |                     |                                                                                                                                                                                                                                                                                                                                                                                                                                                                                                                                                                                                                                                                                                                                                                                                                                                                                                                                                                                                                               |                 |                          |            |               |                |        |                 |                |               |                      |        |                    |                |               |                      |        |                   |                |                 |                          |        |                  |              |  |                 |        |                     |              |  |                 |        |                    |              |  |                     |
| 1.                                                            | 1 EACH              | <u>RADAR DETECTION SYSTEM</u> , TO BE ECONOLITE EVO, OR APPROVED EQUAL. THE DETECTION SYSTEM SHALL INCLUDE 4 DETECTION UNITS AND APPROPRIATE MOUNTING BRACKETS AND COMPONENTS NECESSARY FOR SIGNAL OPERATIONS. MOUNTING BRACKETS, CABLE, CABLE PULLING, CABINET WIRING, WIRING HARNESSSES AND OTHER MISCELLANEOUS HARDWARE ARE CONSIDERED PART OF THE DETECTION SYSTEM.                                                                                                                                                                                                                                                                                                                                                                                                                                                                                                                                                                                                                                                       |                 |                          |            |               |                |        |                 |                |               |                      |        |                    |                |               |                      |        |                   |                |                 |                          |        |                  |              |  |                 |        |                     |              |  |                 |        |                    |              |  |                     |

| ITEM                                                         | QTY.    | DESCRIPTION                                                                                                                                                                                                                                                                                                                                                                                        |
|--------------------------------------------------------------|---------|----------------------------------------------------------------------------------------------------------------------------------------------------------------------------------------------------------------------------------------------------------------------------------------------------------------------------------------------------------------------------------------------------|
| <b>ITEM 656-020C INTERSECTION DETECTION SYSTEM - VIDEO</b>   |         |                                                                                                                                                                                                                                                                                                                                                                                                    |
| <b>CONTRACTOR SUPPLIED MATERIALS</b>                         |         |                                                                                                                                                                                                                                                                                                                                                                                                    |
| 1.                                                           | 1 EACH  | <u>FISHEYE VIDEO DETECTOR</u> , TO BE GRIDSMART FISHEYE CAMERA, OR APPROVED EQUAL. INCLUDES BELL CAMERA, JUCTION BOX, CUSTOM MODULAR POLE ASSEMBLY WITH EXTENSION ARM AND 3-FOOT ELBOW, REPEATERS AND SMARTMOUNT BRACKET.                                                                                                                                                                          |
| 2.                                                           | VARIOUS | <u>MISCELLANEOUS ITEMS</u> , TO INCLUDE MOUNTAIN KIT, ELECTRONIC PROTECTION MODULE (EPM), CAT 5e CABLING AND ALL NECESSARY HARDWARE AND SOFTWARE FOR A COMPLETE INSTALLATION TO SERVICE INTERSECTION APPROACHES AND SHOWN ON THE PLANS.                                                                                                                                                            |
| <b>ITEM 656-020E INTERSECTION DETECTION SYSTEM - THERMAL</b> |         |                                                                                                                                                                                                                                                                                                                                                                                                    |
| <b>CONTRACTOR SUPPLIED MATERIALS</b>                         |         |                                                                                                                                                                                                                                                                                                                                                                                                    |
| 1.                                                           | 1 EACH  | <u>THERMAL DETECTION SYSTEM</u> , TO BE FLIR TRAFIONE, OR APPROVED EQUAL. THE DETECTION SYSTEM SHALL INCLUDE 4 DETECTION UNITS AND APPROPRIATE MOUNTING BRACKETS AND COMPONENTS NECESSARY FOR PEDESTRIAN DETECTION AND SIGNAL OPERATIONS. MOUNTING BRACKETS, CABLE, CABLE PULLING, CABINET WIRING, WIRING HARNESSSES AND OTHER MISCELLANEOUS HARDWARE ARE CONSIDERED PART OF THE DETECTION SYSTEM. |
| <b>ITEM 656-030A INTERSECTION SIGNAL STRUCTURE</b>           |         |                                                                                                                                                                                                                                                                                                                                                                                                    |
| <b>ITEM FURNISHED BY CITY INSTALLED BY CONTRACTOR</b>        |         |                                                                                                                                                                                                                                                                                                                                                                                                    |
| 1.                                                           | 1 EACH  | <u>TRAFFIC SIGNAL MAST ARM</u> , 30-FOOT SIGNAL MAST ARM WITH A 2" SLIPFITTER, TO BE IDAHO STANDARD MAST ARM TRAFFIC SIGNAL POLE IDENTIFICATION NO. ID-2-45-L-4015. MANUFACTURER TO BE VALMONT INDUSTRIES, KW INDUSTRIES, OR APPROVED EQUAL.                                                                                                                                                       |
| <b>ITEM 656-035A INTERSECTION PEDESTRIAN SYSTEM</b>          |         |                                                                                                                                                                                                                                                                                                                                                                                                    |
| <b>CONTRACTOR SUPPLIED MATERIALS</b>                         |         |                                                                                                                                                                                                                                                                                                                                                                                                    |
| 1.                                                           | 8 EACH  | <u>PEDESTRIAN SIGNAL HEAD</u> , HOUSING TO BE 18"x18" TRAFFIC OLIVE GREEN WITH POWDER-COATED ALUMINUM EXTERIOR. SIGNAL HEAD TO BE 16" LED COUNTDOWN HAND/MAN (DIALIGHT, LEOTEK OR APPROVED EQUAL).                                                                                                                                                                                                 |
| 2.                                                           | 4 EACH  | <u>PEDESTRIAN SIGNAL BRACKET</u> , DOUBLE, FOR SIDE OF POLE MOUNTING OF ONE-WAY 16" PEDESTRIAN SIGNAL HEAD. TO BE MCCAIN, PELCO OR APPROVED EQUAL.                                                                                                                                                                                                                                                 |
| 3.                                                           | 8 EACH  | <u>APS PEDESTRIAN PUSH BUTTON</u> , TO INCLUDE 9"x15" MOUNTING ASSEMBLY, PUSH BUTTON, AND 9"x15" SIGN DECAL. TO BE POLARA, CAMPBELL OR APPROVED EQUAL.                                                                                                                                                                                                                                             |

| REVISIONS |          |    |             |
|-----------|----------|----|-------------|
| NO        | DATE     | BY | DESCRIPTION |
| 1         | 3/8/2024 | AG | ADDENDUM 1  |
|           |          |    |             |
|           |          |    |             |

|                 |           |                |                           |
|-----------------|-----------|----------------|---------------------------|
| DESIGNED        | M. HEUGH  | SCALES SHOWN   | ARE FOR 11" X 17"         |
| DESIGN CHECKED  | A. GROVER | PRINTS ONLY    |                           |
| DETAILED        | M. HEUGH  | CADD FILE NAME | 22210_SGL_Mat_031.dgn.DGN |
| DRAWING CHECKED | A. GROVER | DRAWING DATE:  | March 08, 2024            |



**IDAHO TRANSPORTATION DEPARTMENT**  
 YOUR Safety - YOUR Mobility - YOUR Economic Opportunity



**Jacobs**

|             |           |
|-------------|-----------|
| PROJECT NO. | A022(210) |
|-------------|-----------|

|                               |                                        |
|-------------------------------|----------------------------------------|
| TRAFFIC SIGNAL MATERIALS LIST | SH-75 - MAIN ST<br>KETCHUM<br>FIFTH ST |
|-------------------------------|----------------------------------------|

|            |            |
|------------|------------|
| ENGLISH    |            |
| COUNTY     | BLAINE     |
| KEY NUMBER | 22210      |
| SHEET      | 139 OF 176 |

